

# WHAT TO DO IN USHUAIA?

We've prepared a complete guide with all the information about excursions, museums, and activities available in the city — including reference prices and schedules to help you plan your visit.

This guide is updated regularly, so we recommend **not downloading it in advance** for a future trip, as the information may change. Always download it directly from our website once you're in Ushuaia.

Last updated: February 10, 2026



# TABLE OF CONTENTS

TOURING THE CITY	2
ENJOYING THE BEAGLE CHANNEL	4
ESTANCIA HARBERTON	7
USHUAIA - PUERTO WILLIAMS	8
END OF THE WORLD TRAIN	9
TIERRA DEL FUEGO NATIONAL PARK	10
NATIONAL PARK MAP	11
THE GREAT LAKES CIRCUIT	13
TREKKING WITH GUIDES	14
AERoclub USHUAIA	15
HELIUSHUAIA	16
DIVING IN USHUAIA	17
SPORT FISHING	18
HORSEBACK RIDING IN USHUAIA	20
USHUAIA GOLF CLUB	21
PUERTO ALMANZA	22
MARTIAL GLACIER	23
CANOPY	24
RECREATIONAL ACTIVITIES CENTERS	25
TREKKING & ADVENTURE TOURISM	26
TREKKING, CAMPING & MOUNTAIN BIKE EQUIPMENT RENTAL	29

# TOURING THE CITY

## Maritime Museum and Former Ushuaia Prison

Yaganes & Gob. Paz.- Daily from 10 a.m. to 8 p.m. Guided tours: 11:30 a.m. - 4:30 p.m. - 6:30 p.m.

General admission: \$44.000.- Children under 12: free.

The ticket includes: Antarctic Museum, Marine Art Museum, Art Gallery, and Comodoro Augusto Lasserre Naval Museum (Monday to Saturday from 3 p.m. to 7 p.m.), guided visit. (Valid for 2 days). Audio guides available in different languages.

**Theatrical Guided Tours** take place on Mondays, Wednesdays, and Fridays at 8:00 PM. Tickets can be purchased at the museum until 7:30 PM. Not suitable for children under 16 years old. Limited availability.

Approximate price: ARS 25,000. Discounted price: ARS 12,000 (with proof of museum admission purchase).

## End of the World Museum

Maipú 173. Monday to Friday from 10 a.m. to 7 p.m. Saturday from 1 p.m. to 7 p.m.

Guided tour on native peoples: Monday to Friday 11 a.m.

General tour: Tuesday, Thursday, Friday, and Saturday 3 p.m.

Cash only. General admission: \$8.000.-

Children under 14, people with disabilities and Tierra del Fuego residents: FREE.

Download the audio tour and bring your own headphones.

## Former Government House

Maipú 465. Guided tour: Tuesday, Wednesday, Thursday, and Saturday 4 p.m. Same admission as above.

## Former Beban House and City Museum (Pena House)

Maipú & Pluschow. Monday to Friday from 10 a.m. to 6 p.m. Saturday from 3 p.m. to 7 p.m. Free admission.

## Pensar Malvinas Space (Torres House)

Maipú & 12 de Octubre. Daily from 10 a.m. to 5 p.m. Free admission.

## Islas Malvinas Square

Maipú & Luis Pedro Figue - Photographic tour.

## Bahía Encerrada Urban Nature Reserve

Natural, historical, and cultural walk. Bird nesting area.

## Enriqueta Gastelumendi Artisans' Market

25 de Mayo Square - Maipú & Lasserre - Daily from 12 p.m. to 7 p.m.



*Downtown area*

### **Guiando por TDF (Walking City Tour)**

Weekends, Mondays, and holidays 3 p.m. (Spanish) / 4:30 p.m. (English).

Meeting point: Civic Plaza. Weather dependent.

Tip-based activity – suggested contribution \$7,000. Duration: 1 hour. Tours available in other languages upon request.

Reservations via Instagram: @guiandoportdf

### **City Tours**

#### **With travel agencies**

From \$35,000. (Require a minimum number of participants or can be arranged privately).

#### **City Train**

10:30 a.m. – 12 p.m. – 3:30 p.m.

Seniors/Students: \$15,000

National Tourist: \$20,000

Foreign Tourist: \$25,000

#### **Double Decker Bus**

10:30 a.m. – 12:30 p.m. – 3:30 p.m. – 5:30 p.m.

General Admission: \$30,000

National Senior / Person with Disability: \$20,000

TDF Residents and Children: \$15,000

### **Paseo del Fuego Shopping Mall**

Free transfers from Maipú & Lasserre.

Departures: 1 p.m. and 6 p.m.

Return: 9 p.m.

### **Fibras del Fin del Mundo – Spinners and Handweavers of Tierra del Fuego**

Daily from 11 a.m. to 9 p.m.

Spinning Experience (Mondays with prior reservation: +54 2901 527783).

### **Tierra de Enigmas (Escape Rooms)**

[www.tierradeenigmas.com.ar](http://www.tierradeenigmas.com.ar)

### **Thursday Music Nights**

Live bands at the Food Court, every Thursday at 9 p.m.

### **Luggage Storage**

At the Shopping Mall, daily from 10 a.m. to 10 p.m. – Ground Floor.

Book at: <http://wekeep.app/>

### **King Crab Promenade (Sculpture Walk)**

A coastal walkway with bike path and resting areas.

Accessible from the shopping mall or the waterfront.

### **Beagle Viewpoint**

Lookout with panoramic views of Mount Olivia and Cinco Hermanos, with information panels.

Access from Level 1 of the Shopping Mall.

# ENJOYING THE BEAGLE CHANNEL

Departure and ticket sales at the Tourist Pier

Corner of Prefectura Naval Argentina & Lasserre.

Port Fee: \$5,200. Please arrive 30 minutes before departure time.

## Sea Lion Island, Bird Island, Les Eclaireurs Lighthouse + walk on Bridges Islands

### Patagonia Adventure Explorer / Yate Kams

Tel: +54 2901-603181 | Email: [info@patagoniaexplorer.com.ar](mailto:info@patagoniaexplorer.com.ar)

| Web: [www.patagoniaexplorer.com.ar](http://www.patagoniaexplorer.com.ar)

Departures: daily at 10 a.m. and 3 p.m. | Duration: 4 h

Rate: \$100,000 + Port Fee. Includes coffee and snacks. Children 3 to 9 years old pay 50% + port fee. Children up to 2 years old free of charge.

### El Che Turismo Alternativo

Tel: +54 2901-517967 | Email: [cheushuaia@gmail.com](mailto:cheushuaia@gmail.com)

Departures: daily at 10 a.m. and 3 p.m. | Duration: 4 h

Rate: \$115,000. Includes coffee, beverages, craft beer tasting, and savory snacks.

### Yate Tango

Tel: +54 2901-634004

Email: [navegandoelfindelmundo@gmail.com](mailto:navegandoelfindelmundo@gmail.com)

Departures: daily at 10 a.m. and 2 p.m. | Duration: approx. 3 h 30 (minimum 4 passengers). Rate: Adults \$115,000 / Children 6–11 years \$60,000 / Children up to 5 years free of charge. Includes coffee and craft beer tasting.

### Yacht Lunamar – Paludine

Tel: +54 9 11-6671-6733 | Office at the port: 9 a.m. to 6 p.m.

Departures: daily at 9:30 a.m., 12 p.m., and 3 p.m. | Duration: 2 h 30. Rate: \$85,000

### Seaboat

Tel: +54 2901-302384 | Email: [info@sea-boat.com](mailto:info@sea-boat.com)

| Web: [www.sea-boat.com](http://www.sea-boat.com)

Departures: daily at 10:30 a.m. and 2:30 p.m. | Duration: approx. 2 h 30 Rate: Adults \$100,000 / Children 5–11 years \$60,000. **The price does not include the port tax**

The following companies offer daily departures at 9:30 a.m. and 3:30 p.m. Duration: 3 hours | Adult rate: \$100,000

**Rumbo Sur** - Tel: +54 2901-606362

[lineab@rumbosur.com.ar](mailto:lineab@rumbosur.com.ar) - [www.rumbosur.com.ar](http://www.rumbosur.com.ar)

**Canoero** - Tel: +54 2901-601863

[operaciones@hotelyamanas.com.ar](mailto:operaciones@hotelyamanas.com.ar)

**Destino Patagonia** - Tel: +54 2901-581262

[info@destinopatagonia.com](mailto:info@destinopatagonia.com) - [www.destinopatagonia.com](http://www.destinopatagonia.com)

**Terramar Turismo** - Tel: +54 2901-508105

[info@terramar.tur.ar](mailto:info@terramar.tur.ar) - [www.terramar.tur.ar](http://www.terramar.tur.ar)

**Tolkeyén Patagonia** - Tel: +54 2901-619594

[informes@tolkeyenpatagonia.com](mailto:informes@tolkeyenpatagonia.com)

[www.tolkeyenpatagonia.com](http://www.tolkeyenpatagonia.com)

**Piratour** - Tel: +54 2901-486234 - [info@piratour.net](mailto:info@piratour.net)

[www.piratourtravel.tur.ar](http://www.piratourtravel.tur.ar) (no walk on Bridges Islands)

**GENERAL DISCOUNTS FOR NAVIGATIONS: Residents: 30% to 50% off. Seniors: up to 50% off. People with disabilities: 20% off (same discount for a companion listed on the ID). Children under 3: free of charge. Children 4–11: 50% off. From 12 years old: adult fare.**

## Sea Lion Island, Bird Island, Les Eclaireurs Lighthouse + walk on H Island

### Tres Marías

Tel: +54 2901-582060 | Email: [info@tresmariasweb.com](mailto:info@tresmariasweb.com)

| Web: [www.tresmariasweb.com](http://www.tresmariasweb.com)

Daily departures at 09:00 to 12:00 hs // 12:30 to 15:00 hs//15:30 to 18:00 hs | Duration: 2:30 hs hours

Rate: \$100.000

Includes: coffee service

### Velero If (sailboat)

\$125,000 + \$5,000 port fee.

**The price does not include the port tax**

## Sea Lion Island, Bird Island, Les Eclaireurs Lighthouse

### Onashaga

Tel: +54 9 2901-401859

Email: [operaciones@onashagaexpedition.com](mailto:operaciones@onashagaexpedition.com)

Daily departures at 10:00 a.m. and 3:00 p.m. | Duration: 4 hours

Rate: \$105,000

Includes: coffee service (tea, coffee, or mate cocido) + alfajor

## Walk with Penguins (Isla Martillo)

### Piratour

Tel: +54 2901-486234 | Email: [info@piratour.net](mailto:info@piratour.net)

| Web: [www.piratourtravel.tur.ar](http://www.piratourtravel.tur.ar)

Daily departures at 2:30 p.m. | Duration: approx. 6 h

Round trip by land + walk on Martillo Island (Penguin Colony).

Rate: \$195,000 + Harberton Entrance Fee \$45,000

(Estancia Harberton closed on Tuesdays.)

## Combined Penguin Tour (Isla Martillo)

### Ushuaia Boating

Route: Ushuaia – Puerto Almanza – Martillo Island – Ushuaia

Daily departures 8 a.m. to 12:30 p.m. / 2 p.m. to 6:30 p.m.

Includes round-trip ground transfer from Ushuaia's Port + navigation across Paso Guaraní.

Observation of Magellanic and Gentoo penguins.

Rate: Adults \$160,000 / Children (5–11 years) \$110,000

Check-in: 20 minutes before departure at the Tourist Pier.

### Ushuaia Boating - With your own vehicle

Route: Puerto Almanza – Martillo Island – Puerto Almanza

Schedules: 11:30 a.m. and 1:30 p.m.

Rate: Adults \$135,000 / Children (5–11 years) \$95,000

Check-in: 20 minutes before departure at Almanza dock/pier.

### Onashaga

Tel: +54 9 2901-401859

Email: [operaciones@onashagaexpedition.com](mailto:operaciones@onashagaexpedition.com)

Penguin watching from Puerto Almanza.

Round-trip ground transfer from Ushuaia Port to Puerto Almanza + 30-minute navigation to Martillo Island for penguin viewing.

Rate: \$160,000 | Children \$112,000

Valid until December 31, 2025.

Includes snack: coffee, tea, or hot chocolate with croissants.

**With your own vehicle:** ask for available options.

## Conventional Penguin Colony Tour

### Canoero

Departures: 9:00 AM and 3:00 PM (from Oct 16 onward)

Duration: approximately 5 hours

#### **Rates: Don't include port fee \$5,000**

Adults: \$165,000 - Children (4–11): \$82,500 - Seniors: \$132,000  
(20% discount) - People with disabilities: \$82,500 + \$1,500  
(reduced port fee) - Children \$41,250

## Conventional Penguin Colony

### Terramar

Departures: 9:00 AM and 3:00 PM

Rate: Adults \$165,000

### Rumbo Sur / Tolkeyén

Departures: Monday, Wednesday, Friday, and Saturday at 3:00 PM

Boarding: 45 min before departure

Duration: 5–6 hours

#### **Rates:**

Adults: \$165,000

Children (4–11): \$82,500

Children (0–3): free

Argentine seniors: \$132,000

*Port fee included*

## Destino Patagonia

Departures: 9:00 AM and 3:00 PM

Duration: 4–5 hours

Rates:

Adults: \$165,000

Children (4–11): 40% off

Argentine seniors: 20% off

*Port fee not included*

## Combined Penguin Colony (Boat + Bus / Bus + Boat)

### Piratour

Season: Oct 15, 2025 – Mar 15, 2026 (No service on Tuesdays)

Departures: 8:30 AM and 10:30 AM

Duration: approx. 8.5 hours

Rate: \$330,000

- Harberton Ranch entrance \$45,000 (subject to change)
- Port fee \$5,000

# ESTANCIA HARBERTON

Season: October 11 to March 31

Open daily (except Tuesdays), from 12:00 to 19:00

## Guided Tours

Historic Main House (1 h 15 min): 13:00, 15:00, and 17:15

Acatushun Museum (45 min): 14:15, 16:30, and 18:30

## Entrance Fees (October)

General: \$45,000 | Argentine visitors: \$38,000 | Tierra del Fuego residents: \$35,000

## Tea House and Lunches

Open from 12:00 to 19:00

Homemade pastries and traditional fixed menus (main course, soft drink, rhubarb dessert, and tea/coffee)

Approximate prices: \$34,000–\$40,000

# USHUAIA - PUERTO WILLIAMS

## ONASHAGA EXPEDITIONS

Tel: +54 2901-401859 | Email: [info@onashagaexpeditions.com](mailto:info@onashagaexpeditions.com)

The journey begins at our office located at the Tourist Pier. After completing the necessary migration procedures, we start navigating across Ushuaia Bay toward **Puerto Navarino (Chile)**, crossing the **Beagle Channel** for approximately **40 minutes**. Upon arrival, passengers go through Chilean immigration and continue by land to **Puerto Williams**.

**Return from Puerto Navarino:** 9 a.m.

**Meeting time:** 9:30 a.m. at Ushuaia Port to complete migration procedures.

**Crossing time:** 10 a.m.

### Rates:

- Monday to Friday: One way USD 160 / Round trip USD 280
- Children under 4 years old: free of charge
- Minimum: 6 passengers

### From Puerto Williams

**Departure time:** 8:45 a.m. (from Gobernación Marítima, Miramar 96)

**Arrival in Ushuaia:** approximately 12 p.m.

## Included services

- Boat transfer from Ushuaia to Puerto Navarino (and vice versa, depending on the selected leg).  
Approximate duration: 40 minutes (weather dependent)
- Van transfer from Puerto Navarino to Puerto Williams (and vice versa, depending on the selected leg).  
Approximate duration: 1 h 30 min

**Not included:** international port fee, hotel pick-up.

## Recommendations

- Don't forget your travel documents.
- Crossings are subject to weather conditions.

## Required information for booking

- Full name
- Date and place of birth
- Nationality
- Passport or ID number (if possible, include a photo of the document to be used for travel)

## EXPERIENCIA AUSTRAL

Email: [experienciaaustral@loscauquenes.com](mailto:experienciaaustral@loscauquenes.com)

Check schedules and rates.

# END OF THE WORLD TRAIN

Advance purchase is recommended on the website:

[www.trendelfindelmundo.com.ar](http://www.trendelfindelmundo.com.ar)

Departures from End of the World Station (8 km from the city, heading toward Tierra del Fuego National Park).

Tickets can also be purchased at local travel agencies.

End of the World Train Station: open from 8:45 a.m. to 5:15 p.m.

Phone: +54 9 2901-301141 | Commercial contact for special requests: +54 9 2901-474445

Daily departures at 9:30 a.m., 12 p.m., and 3 p.m.

Morning trains are generally reserved for agencies, but additional departures are added based on demand.

Duration: 1 h 50 min – Round trip.

Rates: General Admission: \$65,000 - Children 4–12 years: \$32,500 - Children under 3 years: free

## **National Park admission is required to ride the train**

General: \$30,000 - Seniors, children under 6 and people with disabilities: FREE

The station includes a café area and a boutique.

Accepted payment methods: Visa, Mastercard, American Express, cash in pesos, dollars, euros, or reals.



*Illustrative Image of the Route*

## **Official Transfer to the Train Station**

Departures (from the port): 8:30 a.m., 11:30 a.m. and 2:00 p.m.

Returns (from the main station): 11:30 a.m., 2:30 p.m. and 5:00 p.m.

Price: AR\$20,000 (round trip) / AR\$15,000 (one way)

Tel: +54 9 2901-584976

Email: [info@best-tourpatagonia.com](mailto:info@best-tourpatagonia.com)

# TIERRA DEL FUEGO NATIONAL PARK

## Admission Rates

General: \$30,000.- Seniors, children under 6, people with disabilities and their companion, and Tierra del Fuego residents: FREE

## Access

National Route No. 3: The park entrance is 12 km from Ushuaia city center. Visitors can enter by private vehicle, organized tour (through authorized companies), or by regular bus service departing from the city center (Maipú & Fadul) with 7 stops inside the park.

## Austral Fueguino Railway

The main station is 2 km before the park entrance. Booking the train allows a 7 km ride to the Park Station, from where visitors can continue exploring the park on foot, by private vehicle, regular buses, or pre-booked excursions with authorized tour companies.

## Ticket Validity

Access tickets are valid for the day of purchase, except for campers (valid 48 h). To receive the second-day consecutive discount, apply through the website. Monthly passes available for individuals and families.

All visitors must present valid documentation to receive applicable discounts (ID, senior, pensioner, student, or disability card including companion).

## Tours

Classic National Park excursions: \$90,000

Trekking and canoe tours from: \$180,000

## Authorized Camping Areas

- Laguna Verde Campground: maximum 10 fire pits
- Los Cauquenes: maximum 7 fire pits
- Río Pipo Campground: maximum 25 fire pits
- Ensenada Zaratiegui Campground: maximum 4 fire pits

*Use of portable stoves, gas cylinders, and heaters is only allowed in designated areas within the campgrounds.*

## ALAKUSH Visitor Center

Café and Restaurant: daily from 10 a.m. to 5:30 p.m.

Public Restrooms and Interpretation Center: daily from 10 a.m. to 7 p.m.


# NATIONAL PARK MAP

## CAMINATAS DEL SECTOR LAPATAIA

**PAMPA ALTA TRAIL**


**Difficulty:** Moderate 3 miles  
**Distance:** 4,7 km (one way)  
**Time:** 2 hs

**Trail description:**  
Abrid's eye view of Beagle Channel and Pipo River Valley. The trail starts at Ensenada Zaratiegui campsite and goes up along Piloto creek. The trail is shorter - 2.3 miles (3.7 km) if started at National Route N° 3. The trail goes down and connects with the unpaved road leading to Pipo River.

**COSTERA TRAIL**


**Difficulty:** Moderate 5 miles  
**Distance:** 8 km (one way)  
**Time:** 4 hs

**Trail description:**  
The trail follows the shoreline and travels through evergreen beech and winter's bark forests. It can be done from Ensenada Zaratiegui or from the crossing of National Route N° 3 and road that leads to acigami Lake.

**HITO XXIV TRAIL**


**Difficulty:** Moderate 2.1 miles  
**Distance:** 3.5 km (one way)  
**Time:** 3 hs

**Trail description:**  
A walk along the norwest bank of Acigami Lake up to Argentina's international border with Chile.

**CERRO GUANACO**


**Difficulty:** Strenuoud 3.7 miles  
**Distance:** 6 km  
**Time:** 4 hs to the summit

**Trail description:**  
The summit of Cerro Guanaco offers an outstanding view of the Fuegian mountain range and its peatbogs. The trail starts at Acigami Lake parking lot. On the way to Hito XXIV trail, and after coressing Guanaco Creek, there is a detour properly marked on the right. The whole trail goes quite steeply up deep slopes.  
**MANDATORY REGISTRATION AT THE VISITOR'S CENTER.**

**RIVER PIPO WATERFALL**

**Difficulty:** Easy 0,5 miles  
**Distance:** 900mts (one way)  
**Time:** 15 min

**Trail description:**  
It starts from the parking slot of the camping Pipo River.

**CROSSING ROUT 3 ENSENADA**

**Difficulty:** Easy 0.8 miles  
**Distance:** 1.3 km (one way)  
**Time:** 40 min

**Trail description:**  
Starting from the cpress of the Route N° 3 towards Ensenada Zaratiegui.

## TIERRA DEL FUEGO NATIONAL PARK - PUBLIC USE AREA



## CARING FOR THE PARK



### CAMP... BUT LEAVE NO TRACE

Leave no trace of your visit or stay in the National Park. Only camp where allowed and avoid ditch-digging.



### NO FIRE ALLOWED

The use of stoves, carafes, heaters or any other element of combustion is prohibited in all public use areas of Tierra del Fuego National Park for a period of 90 days or until the fire danger conditions are modified.



### TRASH... BRING IT BACK WITH YOU

Bring a garbage bag and pack out all of your litter



### PETS

Domestic animals are prohibited. You'd better leave them at home.



### DRIVE SLOW

The speed limit is 25 mi /h (40 km /h). Always drive with lights on. The dust decreases visibility.



### BICYCLES

All vehicles, including mountain bikes, are restricted to maintained roads only.



### NAVIGATION

Non motorized boats, canoes and kayaks.

The camping permit does not exempt visitors from entrance fee payment.

The entrance fee ticket for camping people is valid for 48 hours, if presented with the corresponding camping permit.

## FOR YOUR OWN SAFETY

Stay on the marked trails shown in this brochure and avoid walking on the route or any road used by vehicles.

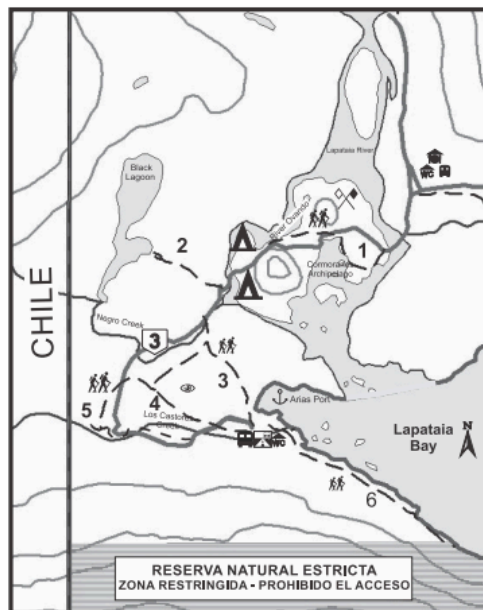
Organize your hiking according to your physical condition.

Wear suitable walking shoes and clothes.

Do not drink creek water.

Don't camp under trees with large boughs.

Do not feed wild animals.



Free camping



Shuttles



National Route N°3



National Police



Lookout



Pier



Restrooms



Trail



End of National Route N°3



Restaurant



PARQUE NACIONAL TIERRA DEL FUEGO  
Av. San Martín 1395 - Ushuaia - Tierra del Fuego  
C.P. V9410BGA - Tel/Fax (02901) 577931  
E-mail: [tierradelfuego@apn.gob.ar](mailto:tierradelfuego@apn.gob.ar)  
ARGENTINA

Ministerio de Ambiente y Desarrollo Sustentable  
Administración de Parques Nacionales  
Av. Rivadavia 1475 - Buenos Aires - C1033AAE  
ARGENTINA

## HIKES IN LAPATAIA AREA

### 1) THE ISLAND HIKE

#### PASEO DE LA ISLA

Difficulty: Easy 0.8 miles  
Distance: 1.3 km (one way)  
Time: 30 min

Trail description: Hike in the Cormoranes archipelago walking along the coasts of Lapataia and Ovando rivers. A good opportunity to watch water birds.

### 2) BLACK SMALL LAKE

#### LAGUNA NEGRA

Difficulty: Easy 0.3 miles  
Distance: 500 mts (one way)  
Time: 15 min

Trail description: Hike to a peatbog in the process of formation.

### 3) LAPATAIA LOOKOUT

#### MIRADOR LAPATAIA

Difficulty: Easy 0.6 miles  
Distance: 980 mts (one way)  
Time: 30min

Trail description: Panoramic view of Lapataia Bay. This walk connects with Del Turbal hike and is a great choice to get to Lapataia Bay walking through a high deciduous beech forest.

### 4) THE PEATBOG HIKE

#### DEL TURBAL

Difficulty: Easy 0.8 miles  
Distance: 1,3 km (one way)  
Time: 40 min

Trail description: An option to get to Route N° 3 and walk to Lapataia Bay. Abandoned beaver lodges can be found along the trail, which goes around a peatbog and connects with the trail that leads to the Castorera hike.

### 5) BEAVER LODGE HIKE

#### CASTORERA

Difficulty: Easy 0.1 mile  
Distance: 200 mts (one way)  
Time: 20 min

Trail description: A hike to visit a beaver dam that allows the observation of the impact produced by this exotic species.

The trail starts on Route N° 3 and goes up along the right bank of Los Castores Creek.

### 6) THE BUOY HIKE

#### SENDA DE LA BALIZA

Difficulty: Easy 0.7 miles  
Distance: 1,2 km (one way)  
Time: 30 min

Trail description: A hike to a buoy located on the border of the Strict Natural Reserve.



Tierra del Fuego National Park  
PUBLIC USE AREA

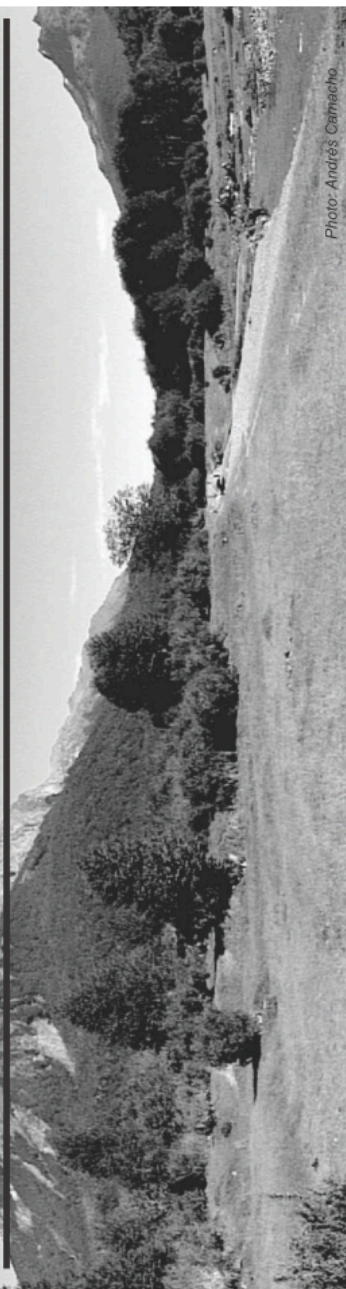


Photo: Andrés Carrascho

# THE GREAT LAKES CIRCUIT

Traveling north along **National Route No. 3**, visitors explore the winter resort areas, **Paso Garibaldi** (Andes mountain crossing), **Lago Escondido**, and **Lago Khami (Fagnano)**. Agencies offer various options depending on preferences and available time, ranging from classic tours to adventure tourism with hiking, canoeing, or beaver watching.

## Excursion Options:

- Classic Lago Escondido and Khami (Fagnano): approx. \$140,000
- Classic Lago Escondido and Khami (Fagnano) in 4x4 vehicles
- Off-Road Lakes + Canoeing: approx. \$220,000
- Lakes 4x4 Night Tour + Beaver Watching + Dinner
- Lago Escondido + Horseback Riding

**Check with travel agencies** for departure times, duration, rates, and additional details.

## Restaurants:

- **La Casona del Lago**

National Route No. 3, Km 3000 – in front of Lago Escondido

Tel: +54 2901-535586

Tuesday to Sunday, 10 a.m. – 4 p.m.

Advance reservation recommended on weekends. Cash or bank transfer only.

- **Villa Marina**

National Route No. 3, Km 2993

Tel: +54 2901-459304

Hours: 1 p.m. – 3 p.m.

Email: [villamarinaushuaia@gmail.com](mailto:villamarinaushuaia@gmail.com)

## TREKKING WITH GUIDES

- **Martial Glacier:** hikes of varying durations, with optional use of crampons.
- **Laguna Esmeralda:** approx. 7 hours, medium difficulty. Rate: \$160,000 approx.
- **Laguna Turquesa:** medium difficulty with optional rock climbing.
- **Ojo del Albino Glacier:** 8–10 hours, high difficulty. Includes packed lunch.
- **Laguna de los Témpanos & Vinciguerra Glacier:** 8 hours, high difficulty. Includes packed lunch.

**Other options available:** hikes with crampons, snowshoes, ice climbing, etc.

# AERoclub USHUAIA

Pasarela Luis Pedro Figue 151

**Contact:** +54 2901-421717 / +54 2901-640005 (WA) / [aeroclubushuaia@hotmail.com](mailto:aeroclubushuaia@hotmail.com) / [www.aeroclubushuaia.com](http://www.aeroclubushuaia.com)

**Opening Hours:** Daily from 9 a.m. to 6 p.m. All flights require prior reservation and are subject to weather conditions.

Overflight Staten Island (3.5 H)	1 Passenger	2+ Passenger Each
Foreign	U\$D 925.-	U\$D 695.-

## Discounts

- People with disabilities: 10% off
- Children under 3 years: free
- Children under 10 years with a seat: 30% off

## Baptism Flights

Foreign Passengers	1	2+ Each
<b>C1 (30 min)</b>	U\$D 185	U\$D 145
<b>C2 (1 H)</b>	U\$D 305	U\$D 235
<b>C3 (1 H + Landing in Tolhuin)</b>	U\$D 405	U\$D 305
<b>C4 (2.5 H + Landing on Darwin Range)</b>	U\$D 745	U\$D 565

# HELIUSHUAIA

**HELIUSHUAIA** – Pasarela Luis Pedro Figue 119 (Old Airport)

**Contact:** +54 2901 44-4444 / +54 2901-600146 (WA)

Email: [info@heliushuaia.com.ar](mailto:info@heliushuaia.com.ar)

Website: [www.heliushuaia.com.ar](http://www.heliushuaia.com.ar)

## Opening Hours:

- Monday to Friday: 8 a.m. – 8 p.m.
- Saturday: 10 a.m. – 6 p.m.

All flights require prior reservation and are subject to weather conditions.

Inquire about Patagonian connections (Argentina – Chile) via private jet.

Route	Duration	Rate (ARS)
Ushuaia city	7 min	\$210.000
Emerald Lake	15 min	\$378.000
Landing in the Andes + Cerro Castor & Winter Resorts	30 min	\$644.000
Beagle Channel	45 min	\$1.022.000
Great Lakes	1 H	\$1.316.000
Mitre Peninsula	3 H	Please Inquire

## Special Jet Flights to Chile

For rates, route, and availability, please inquire directly.

Route	Minimum Passengers
Ushuaia – Puerto Williams	4
Ushuaia – Puerto Natales	4
Ushuaia – Punta Arenas	4

# DIVING IN USHUAIA

## USHUAIA DIVERS

**WA:** +54 2901-619782

**Email:** [ushuaiadivers@yahoo.com.ar](mailto:ushuaiadivers@yahoo.com.ar)

**Web:** [www.ushuaiadivers.com.ar](http://www.ushuaiadivers.com.ar)

**Experience:** Baptism dive. First, you receive a briefing on diving and learn how to use the equipment. Then, the boat takes you to the islands: you start with snorkeling, after which you are equipped for diving. Initial descent is 1–2 meters; if all goes well, you continue to 7 meters, exploring the flora and fauna of the Beagle Channel.

**Price:** USD 130 + daily boarding fee \$3,500 ARS

## BEAGLE BUCEOS

**WA:** +54 2901-506214

**Email:** [beaglebuceos@gmail.com](mailto:beaglebuceos@gmail.com)

### Snorkeling

The easiest option for beginners in underwater exploration. Float on the surface using a snorkel tube, observing the seafloor and marine life of the Beagle Channel. Activity is done in dry suits due to cold water temperatures (same as for diving).

## Baptism Diving

Open to anyone in good health, no prior diving or swimming experience needed. Conducted 1:1 with an instructor who manages all equipment. Includes a basic technical briefing before heading to the coast. In the water, time is allowed for surface adaptation before descent begins.

## Certified Diver Dives

Guided dives, possibly with other divers of the same level. Includes all equipment and a guide. Encounter marine life such as crabs, starfish, anemones, etc. Option for **Boat Dives** at Bridges Islands, one of the most beautiful dive spots in the channel.

### Duration

Approximately 4–5 hours. Includes: safety briefing, fitting of suits and equipment, transfer to dive/snorkeling site, activity, and return for changing and refreshments.

**Requirements - Divers must provide weight, height, and information about any existing medical conditions.**

## SPORT FISHING

**Season:** November to May (may vary depending on the area).

**Permitted methods:** Spinning and fly casting.

**Prohibited:** Trolling/drag fishing from boats and lures with cells/batteries.

Mandatory catch-and-release for all fish within provincial jurisdiction from March 1, 2026 until the end of the season.

### Areas with total fishing ban (all year round):

- Mimica Stream (Chepelmut Lake)
- La Unión/In River (Chepelmut Lake – Yehuin Lake + 200 m)
- Los Salmones Stream
- San Luis Lagoon
- Valdez River (Route 3 – Fagnano Lake + 200 m)

### Tierra del Fuego National Park:

- Authorized rivers: Ovando River and Lapataia River
- Additional permit required (cash only, at the Park Administration office)
- Also available at: [www.reglamentodepesca.org.ar](http://www.reglamentodepesca.org.ar)
- The fishing permit for the National Park can be purchased through the following website: <https://www.permisosdepesca.com.ar/ofertas.php>

Fishing permits are required to fish within Tierra del Fuego National Park

Foreign visitors

Permit	Age	Validity	Price
Daily Permit	Over 18 years old	1 day	\$50.000 ARS aprox
Weekly Permit	Over 18 years old	10 days	\$140.000 ARS aprox
Seasonal Fishing Permit	Over 18 years old	Season	\$280.000 ARS aprox

To obtain fishing permits for Tierra del Fuego National Park, you can do so through the following link:

[www.permisodepesca.com.ar](http://www.permisodepesca.com.ar)

Also available at: [www.reglamentodepesca.org.ar](http://www.reglamentodepesca.org.ar)

### Where to buy permits for other areas:

- **Asociación de Caza y Pesca** (Maipú 822) – Tel. +54 2901 423168
- **Casa de Campo Fly Shop** (Onas 416) – Tel. +54 2901 423331
- **Yefacel** (Pastor Lawrence 707) – Tel. +54 2901 444347

### Fees:

**Residents:** from \$20,000 (daily) to \$70,000 (season pass).

**Foreigners:** from \$60,000 (daily) to \$200,000 (season pass).

*(Detailed information available on our website.)*

# SPORT FISHING

## Bruno Gardi

Professional fishing tour guide

Languages: **Italian • English • Portuguese • Spanish**

**WhatsApp:** +54 9 2901 503475

**Email:** brunoushuaia@gmail.com

**Website:** www.flyfishingushuaia.com

### Private Fishing Excursions

- Small groups: **maximum 2–3 anglers**
- Transportation in **4x4 vehicle**
- **Semi-rigid boat navigation**
- 📍 **Lago Escondido area**
- 🕒 **Duration:** 6 hours

### The excursion includes:

- ✓ Full transportation
- ✓ **High-end fishing equipment**
  - **fly fishing** or **spinning (spoon)**
- ✓ Snack during the trip

# HORSEBACK RIDING IN USHUAIA

## ARAKUR EXPERIENCE

**Tel:** +54 2901-442903 | **Email:** [experience@arakur.com](mailto:experience@arakur.com)

### Native Forest Ride

Explore lenga and coihue forests, ending at the Turbal Lagoon viewpoint. Duration: 60 minutes (1 hour).

### Beagle Channel Viewpoint Ride

Start in lenga and coihue forests, enjoy a snack, then continue to the Beagle Channel viewpoint with panoramic views of Ushuaia, valleys, hills, and the Channel. Duration: 120 minutes.

### Schedule & Rates:

10 a.m. or 3 p.m. – 1-hour ride: USD 90

12pm – 2-hour ride including lunch box: USD 125

## CENTRO HÍPICO DEL FIN DEL MUNDO *(from November)*

**Tel:** +54 2901-569099

**Email:** [centrohipicofindelmundo@gmail.com](mailto:centrohipicofindelmundo@gmail.com)

**Web:** [www.horseridingtierradelfuego.com](http://www.horseridingtierradelfuego.com)

- Located in the Monte Susana area, minimum 2, maximum 10 participants.

- Excursions: 2 hours, 4 hours, 7 hours, 10-day trips to Mitre Peninsula (check calendar).
- Special rates for Tierra del Fuego residents. 10% discount for people with disabilities.

**All excursions include:** specialized guide, transportation, insurance, and refreshments or full meals. Special dietary options available (vegetarian, gluten-free).

## LAGO ESCONDIDO HORSEBACK RIDING

**Tel:** +54 2901-642664

**Email:** [cabalgatalagoescondido@gmail.com](mailto:cabalgatalagoescondido@gmail.com)

Half-day excursions (minimum 2–3 people). **Transportation included; inquire for rates without transportation.** All rates in Argentine currency.

1 H - Adult Rate: \$130.000 - Children under 11: \$91.000

2 H - Adult Rate: \$160.000 - Children under 11: \$112.000

3 H -Adult Rate: \$200.000 - Children under 11: \$140.000

2-Hour Ride + Argentine BBQ **(“ASADO”)**

Adult Rate: \$240,000 - Children under 11: \$168,000

**Schedule:** 5 - 10:30 p.m. Morning departures available upon request.

**All rides include:** specialized guide (request in advance), transportation, insurance, and refreshments or full meals. Special dietary options available.

# USHUAIA GOLF CLUB

## Contact Information

**Location:** Valle del Río Pipo, 7 km from Ushuaia city center

**WA:** +54 2901-616676

**Email:** [ushuaiagolfclub@gmail.com](mailto:ushuaiagolfclub@gmail.com)

## Club Hours

Tuesday–Friday: 10:00–18:00

Saturday, Sunday & holidays: 9:00–19:00

Monday: by reservation

## Course Details

- Length: 5,371 m (5,823 yards)
- 9 holes with double tee, par 70 (35 out, 35 in)
- Layout: 2 par-3, 5 par-4, 2 par-5
- **Improved Lie:** Allowed across the course (ball can be moved up to 20 cm)

## Rates

### Argentine Golf Association Members:

Green Fee: \$30,000 ARS

Club Rental: \$20,000 ARS

### Non-handicap Players

Green Fee 18 holes: USD 60

Club Bag Rental: USD 25

Classes and promotions: inquire at the club

**Staff:** Bilingual (English)

**Caddie:** Not available

**Inquiries:** +54 2901-616676 – Guillermo G. Godoy

**President:** Fulvio Baschero

## PUERTO ALMANZA

Fishermen's village located 75 km from Ushuaia. Offers restaurants, recreational centers, Puerto Pirata, La Granja del Beagle, and Chacra Ruka Kellen. Excursions include *Sabores del Beagle*, *Ruta de la Centolla*, king crab fishing with gourmet lunch, agrotourism, and activities linked to indigenous communities. Helicopter tours to the *Grandes Lagos* are also available.

### Dining in Puerto Almanza

#### A'kum Restó & Me

**Phone:** +54 2901-656463 **Hours:** Monday to Friday: 8:30 a.m. to 8:30 p.m. Weekends: 9:00 a.m. to 8:00 p.m. **Reservation:** Recommended, especially for holidays.

#### Chacra Ruka Kellen

**Hours:** Daily 13:00–20:00 **Reservation:** Not required

#### La Mesita de Almanza

**Phone:** +54 2901-516059 **Hours:** Friday–Sunday from 12:00  
**Reservation:**  
WhatsApp or first-come, first-served **Payment:** All accepted

#### La Sirena y el Capitán

**Phone:** +54 2964-610198 **Email:** [lasirenayelcapitan@gmail.com](mailto:lasirenayelcapitan@gmail.com)  
**Hours:** Wednesday–Monday 12:00–17:00 (Closed Tuesday)  
**Reservation:** Required **Payment:** All accepted

#### La Oveja (King Crab Route)

**Phone:** +54 2901-536154 **Email:**

[evt.rutadelacentolla@gmail.com](mailto:evt.rutadelacentolla@gmail.com) **Hours:** Daily 11:30–17:00

**Reservation:** Required, exclusive for agency passengers

#### El Gran Chaparral

**Phone:** +54 2901-634177 **Reservation:** Required via WhatsApp

#### El Frontón Restaurant

**Phone:** +54 2901-585779 **Hours:** Daily 11:30–18:00

#### El Rincón del Viejo

**Status:** Closed until further notice

#### Jemmy y York

**Phone:** 011-3135-1667 **Hours:** Daily 10:00–18:00

#### Puerto Pirata

**Phone:** +54 2901-470068 **Hours:** Daily 12:00–17:00 (Closed Wednesday)  
**Reservation:** Required **Status:** Closed until November

#### Zorro Viejo Puerto Almanza

**Phone:** +54 2964-600321 **Email:**  
[zorroviejopuertoalmanza@gmail.com](mailto:zorroviejopuertoalmanza@gmail.com) **Hours:** Thursday–Sunday & holidays 11:30–22:30 **Reservation:** Required **Payment:** All accepted

#### Ona Restorán

**Phone:** +54 2901-614459 **Hours:** Daily 12:00–18:30 **Reservation:** Required

#### Casa Nómadas Almanza

**Phone:** +54 2901-634177 **Hours:** Daily 11:00–17:00 **Reservation:** Required

# MARTIAL GLACIER

Located 7 km from the city center.

## Gastronomy

La Cabaña Casa de Té: Daily 8:00–20:00

La Cabaña Beer Point: Daily 8:00–20:00 (Tuesday & Wednesday 12:30–20:30)

Mountain Refuge: *Temporarily closed*

## PARQUE DEL FIN DEL MUNDO

Phone: +54 9 2901 588323

## Summer Season Activities

### Hiking

Five scenic trails through forests, streams, and viewpoints overlooking the Beagle Channel.

### Glacier Martial Approach

Panoramic hike for nature lovers.

### Photo Tours & Guided Excursions

Led by specialized guides in local flora, fauna, and history.

### Relax in Nature

Outdoor rest areas to enjoy the natural surroundings.

## Authorized Trails

### Del Bosque

- Difficulty: Media
- Duration: 30 min (total)
- Elevation gain: 100 m

### Mirador del Glaciar

- Dificultad: Media
- Distance: 2.500 m
- Duration: 75 min
- Elevation gain: 220 m

### Mirador de las Lagunas

- Duration: 150 min
- Distance: 5.500 m
- Elevation gain: 270 m

### De las Nubes

- Duration: 150 min
- Elevation gain: 620 m

### De los Vientos

- Dificultad: Alta
- Distance: 7.200 m
- Duration: 240 min
- Elevation gain: 665 m

## Visitor Service Fee (SAV)

Foreign visitors: \$13,000 · National residents: \$6,500 · Students (ID): \$3,500 · Children under 12, retirees & people with disabilities: Free

Includes first aid, emergency response, high-complexity ambulance, and liability insurance.

# CANOPY

Location: Luis Fernando Martial 3551

The Martial Glacier Reserve transforms during the summer, leaving behind activities such as skiing and snowshoeing. This is the perfect time to enjoy adrenaline from above.

The canopy experience consists of ropes and pulleys installed on trees in a way that does not cause any damage (no nails were used in the installation of the system). Using a harness and connectors, participants slide along strong cables while following a circuit through the forest.

## Contact Information

WhatsApp: +54 9 2901 655392

Email: [canopyushuaia@gmail.com](mailto:canopyushuaia@gmail.com)

Website: <https://www.canopyushuaia.com.ar>

Instagram: @canopyushuaia

Thursday to Monday, 10:00 a.m. to 4:45 p.m. Outside these hours, advance reservation is required.

## Long Circuit – 9 zip lines and 2 suspension bridges

**Approx. price: ARS 65,000**

It includes 9 zip lines and 2 suspension bridges. This is the most fun circuit, not only because it has more zip lines, but also because the suspension bridges have features that make them

more attractive for adventure seekers. Two people can complete this circuit in 30 minutes.

## Short Circuit – 7 zip lines (ideal for groups of more than 15 people)

**Approx. price: ARS 55,000**

It consists of 7 zip lines. This circuit is ideal for groups of more than 10 passengers and for those with limited time. Two people can complete this circuit in approximately 30 minutes.

There is also a 6–zip line circuit for groups of 20 or more people and for schools. As a reference, 20 people can complete this circuit in approximately 1 hour.

**Important: Children under 10 years old receive a 10% discount. For safety reasons, they must be accompanied by an adult.**

## RECREATIONAL ACTIVITIES CENTERS

In the valley surrounded by mountains, on the outskirts of Ushuaia, you'll find several activity centers and dining establishments.

Most of them are located along National Route 3.

### Siberianos del Fuego

20 km away – Tel: +54 9 2901 50-9320

**Kennel visits:** from 10 a.m. to 4 p.m.

Rates per person: Ages 14 and up \$20,000 | Under 14 \$15,000 | Under 5 free.

**Husky Mini Trekking:** Duration 1h15. Departures at 11:00 a.m. and 2:00 p.m. Difficulty: easy.

Ages 14 and up \$50,000 | Under 14 \$40,000 | Under 5 free.

**Entrance + husky mini trekking + lunch included:**

Ages 14 and up \$85,000 | Under 14 \$65,000 | Under 5 pay only what they consume.

### Nunatak – Antartur

20 km away – Tel: +54 9 2901 61-1338

Combined activities. Bookings: Antartur travel agency.

### Tierra Mayor

21 km away – Tel: +54 9 2901 61-9245

All-you-can-eat Patagonian lamb.

### Llanos del Castor

24 km away – Tel: +54 9 2901 65-3848

Restaurant and café. All-you-can-eat lamb and à la carte menu. Lodging available. Advance reservation required.

### Valle Hermoso

24.5 km away – Tel: +54 9 2901 60-2313

Advance reservation required. Combined activities

Lunch or dinner. Transfers included. Beavers watching-

### Las Cotorras

25 km away – Restaurant open daily from 10 a.m.

All-you-can-eat Patagonian lamb and à la carte menu.

Reservations: +54 9 2901 48-2796

Whisky Bar: Tuesdays, Thursdays, and Saturdays from 11:30 a.m. to 3 p.m.

### Cerro Castor (TEMPORARILY CLOSED)

27 km away – [www.cerrocator.com](http://www.cerrocator.com) - Open daily 10 a.m. to 5 p.m. Mountain café, ice-skating rink, and cross-country ski trail.

Ski and snowboard center with equipment rentals, lessons, restaurants, and shops. More than 30 runs of varying difficulty.

Nursery, lockers, and adaptive skiing available.

**Morada del Águila Restaurant** – Closed.

### Haruwen

36 km away – Tel: +54 9 2901 60-4893

Restaurant, café, Motorcycle Museum, and Distillery.

### Park Austral

Combined activities including ATVs, horseback riding, and local cuisine. Bookings: Brasileiros em Ushuaia – Tel: +54 9 2901 40-8801

## TREKKING & ADVENTURE TOURISM

*Some activities are available year-round, while others depend on weather conditions. Private tours can be arranged. Guides are trained to advise on the necessary equipment.*

Name	Contact	Activities Offered
<b>Alma Calma Expediciones</b>	2901 582989 • nico@almacalma.net	Trekking to Laguna Esmeralda.
<b>Antartur</b>	<b>Rosas 184</b> • 2901 611338 • agencias@antartur.tur.ar • <a href="http://www.antartur.tur.ar">www.antartur.tur.ar</a>	Trekking to Laguna Esmeralda, Glaciar Vinciguerra, and Ojo del Albino. Off Road 4x4 combined with canoeing on Lago Escondido.
<b>Arakur Experience</b>	<b>Héroes de Malvinas 2621</b> • 2901 442900 • fo@arakur.com	Trekking to Laguna Esmeralda and Estancia Túnel to Río Encajonado. Horseback riding in Alarken Reserve.
<b>Arpón Turismo</b>	<b>Alem 3129</b> • +54 9 2901 503892 • reservas@arpontrekking.com • <a href="http://www.arpontrekking.com">www.arpontrekking.com</a>	Trekking to Laguna Esmeralda, Estancia Túnel, Martial, Vinciguerra, and Ojo del Albino Glaciers.
<b>Best Tour Patagonia</b>	<b>Gob. Godoy 55</b> • +54 9 2901 467380 • info@best-tourpatagonia.com • <a href="http://www.best-tourpatagonia.tur.ar">www.best-tourpatagonia.tur.ar</a>	Trekking to Laguna Esmeralda.
<b>Brasileiros em Ushuaia</b>	<b>San Martín 870</b> • 2901 422157 • <a href="http://www.brasileirosemushuaia.com.br">www.brasileirosemushuaia.com.br</a>	Trekking to Laguna Esmeralda, Martial Viewpoint, and Laguna de los Témpanos. 4x4 Off Road Lakes, snowmobiles, and ATVs at Park Austral.
<b>Canal Fun &amp; Nature</b>	<b>Roca 136</b> • 2901 431591 • info@canalfun.com • <a href="http://www.canalfun.com">www.canalfun.com</a>	4x4 Off Road to Lago Escondido and Fagnano. Canoeing on Río Lasifashaj + hiking on Gable Island + navigation to Estancia Harberton (penguin colony).
<b>Haush Expediciones</b>	2901 615561 • elchapans@gmail.com	Trekking to Valle Olum and Bahía Sloggett in

		Península Mitre Natural Area.
<b>Info de Ushuaia</b>	admin@infodeushuaia.com • <a href="http://www.infodeushuaia.com">www.infodeushuaia.com</a> • 2901 612142	Trekking to Laguna Esmeralda (alternative route via Arroyo Esmeralda).
<b>Isla de los Fuegos</b>	<b>San Martín 611</b> • 2901 580525 • ventas@isladelosfuegos.com.ar	Trekking to Laguna Esmeralda. Off Road to Lago Escondido and Fagnano.
<b>Magellanic Nature Tours</b>	<b>Salvador Dalí 2005</b> • 2901 414248 • magellanic@hotmail.com • <a href="http://www.magellanicnaturetours.com">www.magellanicnaturetours.com</a>	Birdwatching treks to Laguna Esmeralda, Paso Garibaldi, Monte Susana, and Glaciar Martial.
<b>Meru Viajes y Turismo</b>	11 6908 4059 • meru.evt@gmail.com • <a href="http://www.meruviajes.tur.ar">www.meruviajes.tur.ar</a>	Trekking to Laguna Esmeralda.
<b>Natural Hiking by Andes Fueguinos</b>	2901 476656 • naturalhikingush@gmail.com	Treks to Laguna Esmeralda, Lagunas Gemelas, Martial Glacier Viewpoint, Monte Susana, Laguna de los Témpanos, and Vinciguerra Glacier.
<b>Patagon Mountain Travel Agency</b>	2901 609991 • patagonmountaintravel@gmail.com • <a href="http://www.patagonmountainagency.com">www.patagonmountainagency.com</a>	Treks in Península Mitre (Bahía Sloggett & Bahía Aguirre). Treks to Laguna Turquesa, Valle Carbajal, Cerro Cinco Hermanos, Torres del Río Chico, and Martial Area. Backcountry skiing and splitboarding in Martial, Olum, and Garibaldi Valleys.
<b>Taun Ushuaia</b>	<b>Hol Hol 1403</b> • 2901 524417 • ignacioallendeguia@gmail.com	Treks to Ojo del Albino Glacier, Vinciguerra Glacier, Monte Susana, and Lagunas Gemelas.
<b>Tierra del Fuego Aventura</b>	<b>San Martín 206</b> • 2901 600177 • comercial@tierradelfuegoaventura.com • <a href="http://www.tierradelfuegoaventura.com">www.tierradelfuegoaventura.com</a>	4x4 Off Road to Lago Escondido & Fagnano with lunch at Villa Marina. Treks to Martial Glacier Base Viewpoint and Laguna Esmeralda.

<b>Tierra Turismo Excursiones Naturales</b>	<b>De los Ñires 2280, 1ºD</b> · 2901 610443 · info@tierraturismo.com	Trekking to Laguna Esmeralda. 4x4 Off Road to Lago Escondido and Fagnano.
<b>Titan Cuatro Elementos</b>	<b>Hol Hol 1390</b> · 2901 401391 · titan4elementos@gmail.com · <a href="http://www.titancuatroelementos.com">www.titancuatroelementos.com</a>	Treks to Laguna Esmeralda, Laguna Turquesa, Ojo del Albino Glacier, Submarino Waterfall, Torres del Río Chico, and Vinciguerra Glacier.
<b>Ushuaia Extremo Travels</b>	<b>San Martín 1354</b> · 2901 619587 · info@ushuaiaextremotravels.com · <a href="http://www.ushuaiaextremoevt.tur.ar">www.ushuaiaextremoevt.tur.ar</a>	Electric Fat Bike to beaver ponds (winter), Andes crossing by bike, cycling to Playa Larga Reserve and Estancia Túnel. 4x4 Off Road to Lago Escondido & Fagnano. Treks to Ojo del Albino Glacier, Laguna de los Témpanos, Vinciguerra, and Laguna Esmeralda.
<b>Ushuaia Outdoors</b>	+54 9 2901 607267 · reservas.ushuaiaoutdoors@gmail.com · @ushuaiaoutdoors	4x4 Off Road to Lakes with trekking and canoeing. Trekking to Laguna Esmeralda. Full Day Almanza. Cabo San Pablo excursion.
<b>Ushuaia Patagonia Trekking</b>	11 6761 2300 · jabaeza89@gmail.com	Trekking to Vinciguerra Glacier.
<b>Xplor Turismo</b>	2901 566666 · info@xplorturismo.com · <a href="http://www.xplorturismo.com">www.xplorturismo.com</a>	Trekking to Laguna Esmeralda and Lagunas Gemelas.
<b>Frecuencia Sur</b>	<b>Dos Banderas Casa 17</b> · frecuenciasurushuaia@gmail.com	Treks to Laguna Esmeralda, Martial Glacier, Laguna de los Témpanos, and Vinciguerra Glacier.
<b>Alma Calma Expediciones</b>	2901 582989 · nico@almacalma.net	Trekking to Laguna Esmeralda.

## TREKKING, CAMPING & MOUNTAIN BIKE EQUIPMENT RENTAL

PLACE	ADDRESS	CONTACT	SERVICES	WEBSITE / EMAIL
<b>Ushuaia Extremo Rental</b>	San Martín 1354	WA: +54 9 2901 619587	Bicycle rental: \$20,000 per day. Trekking boots: \$8,500 per day. Rental of tents, sleeping bags, mats, jackets, pants, boots, crampons, trekking poles.	<a href="http://www.ushuaiaextremo.com">www.ushuaiaextremo.com</a>
<b>Home Bike</b>	Gob. Paz 591	Tel: 433108 WA: +54 9 2901 493613	Bicycle rental: \$20,000 per day. Trekking boots: \$7,900 per day.	
<b>Patagonia Rental</b>	Tekenika 164	WA: +54 9 2901 656052	Bicycle rental: \$15,000 per day. Trekking boots: \$8,000 per day. Jacket or pants: \$10,000 per day.	patagoniarentalski@gmail.com <a href="http://www.patagoniarental.com.ar">www.patagoniarental.com.ar</a>
<b>Wind Fly</b>	De los Ñires 2466	WA: +54 9 2901 515158	Trekking boots: \$7,000 per day. Jacket or pants: \$8,000 per day. Sale of camping and nautical gear.	<a href="http://www.windflyushuaia.com.ar">www.windflyushuaia.com.ar</a>
<b>Cumbre Rental</b>	San Martín 830	WA: +54 9 2901 601514	Trekking boots: \$11,900 per day. Rental of poles, gaiters, crampons, etc.	<a href="http://www.cumbresrental.com">www.cumbresrental.com</a>
<b>Uliwaia</b>	Patagonia 48	WA: +54 9 2901 634821	Trekking boots: \$6,500 per day. Pants: \$7,000 per day. Trekking and camping equipment rental.	<a href="http://www.uliwaia.com">www.uliwaia.com</a>
<b>Dr. Snow</b>	Gob. Deloqui 737	WA: +54 9 2901 516809	Trekking boots: \$8,000 per day. Trekking and camping gear rental. Clothing for Antarctica.	<a href="http://www.drsnowrental.com">www.drsnowrental.com</a>
<b>Nieve de Montaña</b>	Gob. Deloqui 399	WA: +54 9 2901 611516	Jackets, pants, trekking boots, poles, backpacks. Ask about combo deals.	