

# WHAT TO DO IN USHUAIA?

We've prepared a complete guide with all the information about excursions, museums, and activities available in the city — including reference prices and schedules to help you plan your visit.

This guide is updated regularly, so we recommend **not downloading it in advance** for a future trip, as the information may change. Always download it directly from our website once you're in Ushuaia.

**Last updated: July, 03 2026**



# TABLE OF CONTENTS

|   |    |
|---|----|
| TOURING THE CITY                                      | 2  |
| TACHUELA OYARZÚN ICE SKATING RINK                     | 4  |
| ENJOYING THE BEAGLE CHANNEL                           | 5  |
| TIERRA DEL FUEGO NATIONAL PARK                        | 7  |
| NATIONAL PARK MAP                                     | 8  |
| THE GREAT LAKES CIRCUIT                               | 10 |
| TREKKING WITH GUIDES                                  | 11 |
| AEROCLUB USHUAIA                                      | 12 |
| HELIUSHUAIA   | 13 |
| DIVING IN USHUAIA                                     | 14 |
| HORSEBACK RIDING<br>IN USHUAIA                        | 15 |
| USHUAIA GOLF CLUB                                     | 16 |
| PUERTO ALMANZA  | 17 |
| MARTIAL GLACIER                                       | 18 |
| RECREATIONAL ACTIVITIES CENTERS                       | 19 |
| TREKKING & ADVENTURE TOURISM                          | 20 |
| TREKKING, CAMPING & MOUNTAIN BIKE EQUIPMENT<br>RENTAL | 24 |

# TOURING THE CITY

## Maritime Museum and Former Ushuaia Prison

Yaganes & Gob. Paz.- Daily from 10 a.m. to 8 p.m. Guided tours: 11:30 a.m. - 6:30 p.m.

General admission: \$44.000.- Children under 12: free.

The ticket includes: Antarctic Museum, Marine Art Museum, Art Gallery, and Comodoro Augusto Lasserre Naval Museum (Monday to Saturday from 3 p.m. to 7 p.m.), guided visit. (Valid for 2 days). Audio guides available in different languages.

## End of the World Museum

Maipú 173. Monday to Friday from 10 a.m. to 7 p.m. Saturday from 1 p.m. to 7 p.m.

Guided tour on native peoples: Monday to Friday 11 a.m.

General tour: Tuesday, Thursday, Friday, and Saturday 3 p.m.

Cash only. General admission: \$9.500.-

Children under 14, people with disabilities and Tierra del Fuego residents: FREE.

Download the audio tour and bring your own headphones.

## Former Government House

Maipú 465. Guided tour: Tuesday, Wednesday, Thursday, and Saturday 4 p.m. Same admission as above.

## Former Beban House and City Museum (Pena House)

Maipú & Pluschow. Monday to Friday from 10 a.m. to 6 p.m. Saturday from 3 p.m. to 7 p.m. Free admission.

## Pensar Malvinas Space (Torres House)

Maipú & 12 de Octubre. Daily from 10 a.m. to 5 p.m. Free admission.

## Enriqueta Gastelumendi Artisans' Market

25 de Mayo Square - Maipú & Lasserre - Daily from 12 p.m. to 7 p.m.

## Islas Malvinas Square

Maipú & Luis Pedro Figue - Photographic tour.

## Bahía Encerrada Urban Nature Reserve

Natural, historical, and cultural walk. Bird nesting area.

## Nave Tierra (self-sustaining city house) Visits Monday to

Friday from 10:30 a.m. to 5:00 p.m. Free admission. Duration: 30 minutes.



*Downtown area*

### **Guiando por TDF (Walking City Tour)**

Daily 3 p.m. (Spanish) / 4:30 p.m. (English).

Meeting point: Civic Plaza. Weather dependent.

Tip-based activity – suggested contribution \$7,000. Duration: 1 hour. Tours available in other languages upon request.

Reservations via Instagram: @guiandoportdf

### **City Tours**

#### **With travel agencies**

From \$35.000. (Require a minimum number of participants or can be arranged privately).

### **Paseo del Fuego Shopping Mall**

Free transfers from Maipú & Lasserre.

Departures: 1 p.m. and 6 p.m. Return: 9 p.m.

Activities on the Shopping Center

Shopping centers: from 11 am to 9 pm

Food court: Sundays to Thursdays from 11 am to 11 pm

Fridays, Saturdays and holidays from 11 am to midnight

### **Fibras del Fin del Mundo – Spinners and Handweavers of Tierra del Fuego**

Daily from 11 a.m. to 9 p.m.

Spinning Experience (Mondays with prior reservation: +54 2901 527783).

### **Tierra de Enigmas (Escape Rooms)**

[www.tierradeenigmas.com.ar](http://www.tierradeenigmas.com.ar)

### **Thursday Music Nights**

Live bands at the Food Court, every Thursday at 9 p.m.

### **Luggage Storage**

At the Shopping Mall, daily from 10 a.m. to 10 p.m. – Ground Floor.

Book at: <http://wekeep.app/>

### **King Crab Promenade (Sculpture Walk)**

A coastal walkway with bike path and resting areas.

Accessible from the shopping mall or the waterfront.

### **Beagle Viewpoint**

Lookout with panoramic views of Mount Olivia and Cinco Hermanos, with information panels.

Access from Level 1 of the Shopping Mall.

# Tachuela Oyarzún Ice Skating Rink

Municipal Sports Center: Monday to Friday from 9 am to 9 pm.

Weekends and holidays, 2 pm to 9 pm.

WhatsApp: +54 9 2901 531266

Yamana Bar PatIn By GDS: Daily, 9 am to midnight.

LOCKER RENTAL PER HOUR

MONTHLY PASS

SEASONAL PASS

Foreign Tourist RATES

DAILY PASS + SKATE RENTAL PER HOUR

\$35.000.-

# ENJOYING THE BEAGLE CHANNEL

Departure and ticket sales at the Tourist Pier

Corner of Prefectura Naval Argentina & Lasserre.

Port Fee: \$5,250. Please arrive 30 minutes before departure time.

## Sea Lion Island, Bird Island, Les Eclaireurs Lighthouse + walk on Bridges Islands

### Patagonia Adventure Explorer / Yate Kams

Tel: +54 2901-603181 | Email: [info@patagoniaexplorer.com.ar](mailto:info@patagoniaexplorer.com.ar)

| Web: [www.patagoniaexplorer.com.ar](http://www.patagoniaexplorer.com.ar)

Departures: daily at 10 a.m. and 3 p.m. | Duration: 4 h

Rate: \$100,000 + Port Fee. Includes coffee and snacks. Children 3 to 9 years old pay 50% + port fee. Children up to 2 years old free of charge.

### Yacht Lunamar – Paludine

Tel: +54 9 11-6671-6733 | Office at the port: 9 a.m. to 6 p.m.

Departures: daily at 9:30 a.m., 12 p.m., and 3 p.m. | Duration: 2 h 30. Rate: \$85,000

### Seaboat

Tel: +54 2901-302384 | Email: [info@sea-boat.com](mailto:info@sea-boat.com)

| Web: [www.sea-boat.com](http://www.sea-boat.com)

Departures: daily at 10:30 a.m. and 2:30 p.m. | Duration: approx. 2 h 30 Rate: Adults \$100,000 / Children 5–11 years \$60,000. **The price does not include the port tax**

The following companies offer daily departures at 10 a.m. and 3 p.m. Duration: 3 hours | Adult rate: \$120,000 + Port Fee. Children (4 - 11): \$60,000 + Port Fee.

**Rumbo Sur** - Tel: +54 2901-606362

[lineab@rumbosur.com.ar](mailto:lineab@rumbosur.com.ar) - [www.rumbosur.com.ar](http://www.rumbosur.com.ar)

**Canoero / Satur** - Tel: +54 2901-601863

[operaciones@hotelyamanas.com.ar](mailto:operaciones@hotelyamanas.com.ar)

**Destino Patagonia** - Tel: +54 2901-581262

[info@destinopatagonia.com](mailto:info@destinopatagonia.com) - [www.destinopatagonia.com](http://www.destinopatagonia.com)

**Tolkeyén Patagonia** - Tel: +54 2901-619594

[informes@tolkeyenpatagonia.com](mailto:informes@tolkeyenpatagonia.com)

[www.tolkeyenpatagonia.com](http://www.tolkeyenpatagonia.com)

**Piratour** - Tel: +54 2901-486234 - [info@piratour.net](mailto:info@piratour.net)

[www.piratourtravel.tur.ar](http://www.piratourtravel.tur.ar) (no walk on Bridges Islands)

**GENERAL DISCOUNTS FOR NAVIGATIONS: Residents: 30% to 50% off. Seniors: up to 50% off. People with disabilities: 20% off (same discount for a companion listed on the ID). Children under 3: free of charge. Children 4–11: 50% off. From 12 years old: adult fare.**

## Sea Lion Island, Bird Island, Les Eclaireurs Lighthouse + walk on H Island

### Tres Marías

Tel: +54 2901-582060 | Email: [info@tresmariasweb.com](mailto:info@tresmariasweb.com)

Web: [www.tresmariasweb.com](http://www.tresmariasweb.com)

Daily departures at 12 & 3 pm Duration: 2:30hours

Rate: \$90.000 **Include the port tax**

Includes: coffee service

### Velero If (sailboat)

Ask for special departures

## Sea Lion Island, Bird Island, Les Eclaireurs Lighthouse

### Onashaga

Tel: +54 9 2901-401859

Email: [operaciones@onashagaexpedition.com](mailto:operaciones@onashagaexpedition.com)

Departures daily 10 am & 3 pm. Duration: 3h.

Rate: \$105.200 (Include the port tax)

## Combined Penguin Tour (Isla Martillo)

### Onashaga

Tel: +54 9 2901-401859

Email: [operaciones@onashagaexpedition.com](mailto:operaciones@onashagaexpedition.com)

Penguin watching from Puerto Almanza.

Round-trip ground transfer from Ushuaia Port to Puerto Almanza + 30-minute navigation to Martillo Island for penguin viewing.

Departures daily 2:30 pm. Duration: 5h.

Rate: \$160.000 | Children \$112.000

Includes snack: coffee, tea, or hot chocolate with croissants.

**With your own vehicle:** ask for available options.

# END OF THE WORLD TRAIN

Advance purchase is recommended on the website:

[www.trendelfindelmundo.com.ar](http://www.trendelfindelmundo.com.ar)

Departures from End of the World Station (8 km from the city, heading toward Tierra del Fuego National Park).

Tickets can also be purchased at local travel agencies.

End of the World Train Station: open from 8:45 a.m. to 5:15 p.m.

Phone: +54 9 2901-301141 | Commercial contact for special requests: +54 9 2901-474445

Daily departures at 9:45 a.m., 12:15 p.m., and 3 p.m.

Morning trains are generally reserved for agencies, but additional departures are added based on demand.

Duration: 1 h 50 min – Round trip.

Rates: General Admission: \$70,000 - Children 4–12 years: \$35,000 - Children under 3 years: free

## National Park admission is required to ride the train

General: \$40,000 - Seniors, children under 6 and people with disabilities: FREE

The station includes a café area and a boutique.

Accepted payment methods: Visa, Mastercard, American Express, cash in pesos, dollars, euros, or reals.



*Illustrative Image of the Route*

# TIERRA DEL FUEGO NATIONAL PARK

## Admission Rates

General: \$40.000.- Seniors, children under 6, people with disabilities and their companion, and Tierra del Fuego residents: FREE

## Access

National Route No. 3: The park entrance is 12 km from Ushuaia city center. Visitors can enter by private vehicle, organized tour (through authorized companies), or by regular bus service departing from the city center (Maipú & Fadul) with 7 stops inside the park.

## Austral Fueguino Railway

The main station is 2 km before the park entrance. Booking the train allows a 7 km ride to the Park Station, from where visitors can continue exploring the park on foot, by private vehicle, regular buses, or pre-booked excursions with authorized tour companies.

## Ticket Validity

Access tickets are valid for the day of purchase, except for campers (valid 48 h). To receive the second-day consecutive discount, apply through the website. Monthly passes available for individuals and families.

All visitors must present valid documentation to receive applicable discounts (ID, senior, pensioner, student, or disability card including companion).

## Tours

Classic National Park excursions: \$90,000

Trekking and canoe tours from: \$180,000

## Authorized Camping Areas

- Laguna Verde Campground: maximum 10 fire pits
- Los Cauquenes: maximum 7 fire pits
- Río Pipo Campground: maximum 25 fire pits
- Ensenada Zaratiegui Campground: maximum 4 fire pits

*Use of portable stoves, gas cylinders, and heaters is only allowed in designated areas within the campgrounds.*

## ALAKUSH Visitor Center

Café and Restaurant, souvenirs shop **CLOSED**

Public Restrooms and Interpretation Center: **OPEN FROM 9 AM TO 6 PM**

# NATIONAL PARK MAP

## CAMINATAS DEL SECTOR LAPATAIA

**1 PAMPA ALTA TRAIL**  
**Difficulty:** Moderate **3 miles**  
**Distance:** 4,7 km (one way)  
**Time:** 2 hs

**Trail description:**  
 Abrid's eye view of Beagle Channel and Pipo River Valley. The trail starts at Ensenada Zaratiegui campsite and goes up along Piloto creek. The trail is shorter - 2.3 miles (3.7 km) if started at National Route N° 3. The trail goes down and connects with the unpaved road leading to Pipo River.

**2 COSTERA TRAIL**  
**Difficulty:** Moderate **5 miles**  
**Distance:** 8 km (one way)  
**Time:** 4 hs

**Trail description:**  
 The trail follows the shoreline and travels through evergreen beech and winter's bark forests. It can be done from Ensenada Zaratiegui or from the crossing of National Route N° 3 and road that leads to Acigami Lake.

**3 HITO XXIV TRAIL**  
**Difficulty:** Moderate **2.1 miles**  
**Distance:** 3.5 km (one way)  
**Time:** 3 hs

**Trail description:**  
 A walk along the norwest bank of Acigami Lake up to Argentina's international border with Chile.

**4 CERRO GUANACO**  
**Difficulty:** Strenuoud **3.7 miles**  
**Distance:** 6 km  
**Time:** 4 hs to the summit

**Trail description:**  
 The summit of Cerro Guanaco offers an outstanding view of the Fuegian mountain range and its peatbogs. The trail starts at Acigami Lake parking lot. On the way to Hito XXIV trail, and after coerssing Guanaco Creek, there is a detour properly marked on the right. The whole trail goes quite steeply up deep slopes.

**MANDATORY REGISTRATION AT THE VISITOR'S CENTER.**

**5 RIVER PIPO WATERFALL**  
**Difficulty:** Easy **0,5 miles**  
**Distance:** 900mts (one way)  
**Time:** 15 min

**Trail description:**  
 It starts from the parking slot of the camping Pipo River.

**6 CROSSING ROUT 3 ENSENADA**  
**Difficulty:** Easy **0.8 miles**  
**Distance:** 1.3 km (one way)  
**Time:** 40 min

**Trail description:**  
 Starting from the cpress of the Route N° 3 towards Ensenada Zaratiegui.

## TIERRA DEL FUEGO NATIONAL PARK - PUBLIC USE AREA



Traducción: M. Uria. Colaboración de la Secretaría de Turismo de la Municipalidad de Ushuaia en la reedición. Año 2023.-

## CARING FOR THE PARK



### CAMP... BUT LEAVE NO TRACE

Leave no trace of your visit or stay in the National Park. Only camp where allowed and avoid ditch-digging.



### NO FIRE ALLOWED

The use of stoves, carafes, heaters or any other element of combustion is prohibited in all public use areas of Tierra del Fuego National Park for a period of 90 days or until the fire danger conditions are modified.



### TRASH... BRING IT BACK WITH YOU

Bring a garbage bag and pack out all of your litter



### PETS

Domestic animals are prohibited. You'd better leave them at home.



### DRIVE SLOW

The speed limit is 25 mi /h (40 km /h). Always drive with lights on. The dust decreases visibility.



### BICYCLES

All vehicles, including mountain bikes, are restricted to maintained roads only.



### NAVIGATION

Non motorized boats, canoes and kayaks.

The camping permit does not exempt visitors from entrance fee payment.

The entrance fee ticket for camping people is valid for 48 hours, if presented with the corresponding camping permit.

## FOR YOUR OWN SAFETY

Stay on the marked trails shown in this brochure and avoid walking on the route or any road used by vehicles.

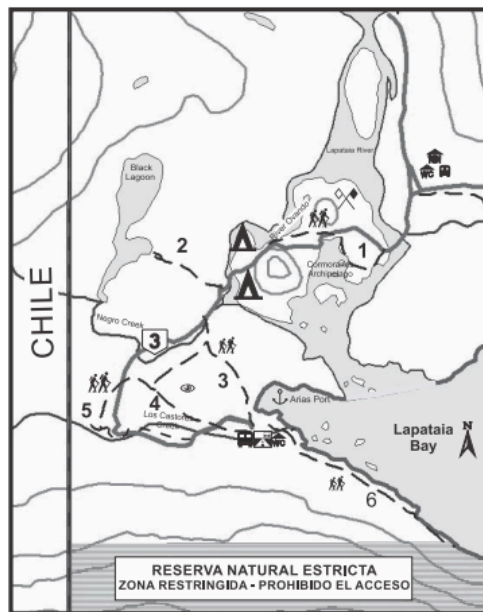
Organize your hiking according to your physical condition.

Wear suitable walking shoes and clothes.

Do not drink creek water.

Don't camp under trees with large boughs.

Do not feed wild animals.



Free camping



Shuttles



National Route N°3



National Police



Lookout



Pier



Restrooms



Trail



End of National Route N°3



Restaurant



PARQUE NACIONAL TIERRA DEL FUEGO  
Av. San Martín 1395 - Ushuaia - Tierra del Fuego  
C.P. V9410BGA - Tel/Fax (02901) 577931  
E - mail: tierradelfuego@apn.gov.ar  
ARGENTINA

Ministerio de Ambiente y Desarrollo Sustentable  
Administración de Parques Nacionales  
Av. Rivadavia 1475 - Buenos Aires - C1033AAE  
ARGENTINA

## HIKES IN LAPATAIA AREA

### 1) THE ISLAND HIKE

Difficulty: Easy 0.8 miles  
Distance: 1.3 km (one way)  
Time: 30 min

#### PASEO DE LA ISLA

Trail description: Hike in the Cormoranes archipelago walking along the coasts of Lapataia and Ovando rivers. A good opportunity to watch water birds.

### 2) BLACK SMALL LAKE

Difficulty: Easy 0.3 miles  
Distance: 500 mts (one way)  
Time: 15 min

#### LAGUNA NEGRA

Trail description: Hike to a peatbog in the process of formation.

### 3) LAPATAIA LOOKOUT

Difficulty: Easy 0.6 miles  
Distance: 980 mts (one way)  
Time: 30min

#### MIRADOR LAPATAIA

Trail description: Panoramic view of Lapataia Bay. This walk connects with Del Turbal hike and is a great choice to get to Lapataia Bay walking through a high deciduous beech forest.

### 4) THE PEATBOG HIKE

Difficulty: Easy 0.8 miles  
Distance: 1,3 km (one way)  
Time: 40 min

#### DEL TURBAL

Trail description: An option to get to Route N° 3 and walk to Lapataia Bay. Abandoned beaver lodges can be found along the trail, which goes around a peatbog and connects with the trail that leads to the Castorera hike.

### 5) BEAVER LODGE HIKE

Difficulty: Easy 0.1 mile  
Distance: 200 mts (one way)  
Time: 20 min

#### CASTORERA

Trail description: A hike to visit a beaver dam that allows the observation of the impact produced by this exotic species.

The trail starts on Route N° 3 and goes up along the right bank of Los Castores Creek.

### 6) THE BUOY HIKE

Difficulty: Easy 0.7 miles  
Distance: 1,2 km (one way)  
Time: 30 min

#### SENDA DE LA BALIZA

Trail description: A hike to a buoy located on the border of the Strict Natural Reserve.



Tierra del Fuego National Park  
PUBLIC USE AREA

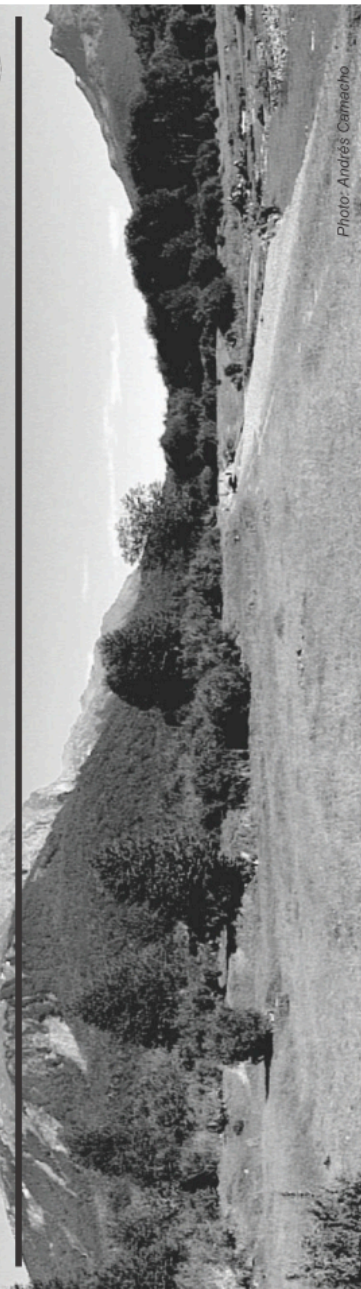


Photo: Andrés Oetricho

# CERRO MARTIAL PARQUE DEL FIN DEL MUNDO

Located 7 km from the city center. Wsp: +54 9 2901 588323  
Open Daily until 5 pm. Cafeteria open until 7 pm

## WINTER ACTIVITIES

### Ski and Snowboard School

Lessons for beginners and intermediate skiers with specialized instructors.

Private lessons

Evening lessons

Group lessons

### Snowshoeing circuits

The ideal way to explore the snowy mountains in an accessible way.

### Sledding Slope

A perfect recreational activity to enjoy with the family.

### Snowpark

A space designed for those who want to practice freestyle skiing or snowboarding.

### Freeride

Natural snow areas for experienced skiers and snowboarders.

## Visitor Services

Chairlift

Refugio del Martial Cafeteria

Rental - Vertical Ski & Snowboard

Photography - Lúcumá Audiovisual

Includes first aid, emergency response, high-complexity ambulance, and liability insurance.

Hiking Sticks Rental: \$7.500.-

Crampons Rental: \$15.000.-

Hiking & Crampons Combo \$20.000.-

| CHAIRLIFT DAY PASS FARE | TARIFAS    |
|-------------------------|------------|
| ADULT                   | \$70.000.- |
| CHILD (-12)             | \$35.000.- |
| SENIOR                  | \$10.500.- |
| PANORAMIC (PEDESTRIAN)  | \$35.000.- |

Transfer with Best Tour travel agency (from hotels)

Departure: 8:15 & 10:15 am

Return: 3 & 5 pm

\$20,000 per person (round trip)

# THE GREAT LAKES CIRCUIT

Traveling north along **National Route No. 3**, visitors explore the winter resort areas, **Paso Garibaldi** (Andes mountain crossing), **Lago Escondido**, and **Lago Khami (Fagnano)**. Agencies offer various options depending on preferences and available time, ranging from classic tours to adventure tourism with hiking, canoeing, or beaver watching.

## Excursion Options:

- Classic Lago Escondido and Khami (Fagnano): approx. \$140,000
- Classic Lago Escondido and Khami (Fagnano) in 4x4 vehicles
- Off-Road Lakes + Canoeing: approx. \$220,000
- Lakes 4x4 Night Tour + Beaver Watching + Dinner
- Lago Escondido + Horseback Riding

**Check with travel agencies** for departure times, duration, rates, and additional details.

## Restaurants:

- **La Casona del Lago**

National Route No. 3, Km 3000 – in front of Lago Escondido

Tel: +54 2901-535586

Tuesday to Sunday, 10 a.m. – 4 p.m.

Advance reservation recommended on weekends. Cash or bank transfer only.

- **Villa Marina**

National Route No. 3, Km 2993

Tel: +54 2901-459304

Hours: 1 p.m. – 3 p.m.

Email: [villamarinaushuaia@gmail.com](mailto:villamarinaushuaia@gmail.com)

## TREKKING WITH GUIDES

- **Martial Glacier:** hikes of varying durations, with optional use of crampons.
- **Laguna Esmeralda:** approx. 7 hours, medium difficulty. Rate: \$160,000 approx.
- **Laguna Turquesa:** medium difficulty with optional rock climbing.
- **Ojo del Albino Glacier:** 8–10 hours, high difficulty. Includes packed lunch.
- **Laguna de los Témpanos & Vinciguerra Glacier:** 8 hours, high difficulty. Includes packed lunch.

**Other options available:** hikes with crampons, snowshoes, ice climbing, etc.

# AEROCLUB USHUAIA

Pasarela Luis Pedro Figue 151

**Contact:** +54 2901-421717 / +54 2901-640005 (WA) / [aeroclubushuaia@hotmail.com](mailto:aeroclubushuaia@hotmail.com) / [www.aeroclubushuaia.com](http://www.aeroclubushuaia.com)

**Opening Hours:** Daily from 9 a.m. to 6 p.m. All flights require prior reservation and are subject to weather conditions.

| <b>Overflight Staten Island (3.5 H)</b> | <b>1 Passenger</b> | <b>2+ Passenger Each</b> |
|---|--------------------|--------------------------|
| Foreign                                 | U\$D 925.-         | U\$D 695.-               |

## Discounts

- People with disabilities: 10% off
- Children under 3 years: free
- Children under 10 years with a seat: 30% off

## Baptism Flights

| <b>Foreign Passengers</b>                   | <b>1</b> | <b>2+ Each</b> |
|---|----------|----------------|
| <b>C1 (30 min)</b>                          | U\$D 185 | U\$D 145       |
| <b>C2 (1 H)</b>                             | U\$D 305 | U\$D 235       |
| <b>C3 (1 H + Landing in Tolhuin)</b>        | U\$D 405 | U\$D 305       |
| <b>C4 (2.5 H + Landing on Darwin Range)</b> | U\$D 745 | U\$D 565       |

# HELIUSHUAIA

**HELIUSHUAIA** – Pasarela Luis Pedro Figue 119 (Old Airport)

**Contact:** +54 2901 44-4444 / +54 2901-600146 (WA)

Email: [info@heliushuaia.com.ar](mailto:info@heliushuaia.com.ar)

Website: [www.heliushuaia.com.ar](http://www.heliushuaia.com.ar)

## Opening Hours:

- Monday to Friday: 8 a.m. – 8 p.m.
- Saturday: 10 a.m. – 6 p.m.

All flights require prior reservation and are subject to weather conditions.

Inquire about Patagonian connections (Argentina – Chile) via private jet.

| Route  | Duration | Rate (ARS)     |
|--|----------|----------------|
| Ushuaia city   | 7 min    | \$218.000      |
| Emerald Lake   | 15 min   | \$392.000      |
| Landing in the Andes<br>+ Cerro Castor &<br>Winter Resorts | 30 min   | \$667.000      |
| Beagle Channel   | 45 min   | \$1.059.000    |
| Great Lakes  | 1 H      | \$1.363.000    |
| Mitre Peninsula  | 3 H      | Please Inquire |

## Special Jet Flights to Chile

For rates, route, and availability, please inquire directly.

| Route                     | Minimum Passengers |
|---------------------------|--------------------|
| Ushuaia – Puerto Williams | 4                  |
| Ushuaia – Puerto Natales  | 4                  |
| Ushuaia – Punta Arenas    | 4                  |

# DIVING IN USHUAIA

## USHUAIA DIVERS

**WA:** +54 2901-619782

**Email:** [ushuaiadivers@yahoo.com.ar](mailto:ushuaiadivers@yahoo.com.ar)

**Web:** [www.ushuaiadivers.com.ar](http://www.ushuaiadivers.com.ar)

**Experience:** Baptism dive. First, you receive a briefing on diving and learn how to use the equipment. Then, the boat takes you to the islands: you start with snorkeling, after which you are equipped for diving. Initial descent is 1–2 meters; if all goes well, you continue to 7 meters, exploring the flora and fauna of the Beagle Channel.

**Price:** USD 130 + daily boarding fee \$3,500 ARS

## BEAGLE BUCEOS

**WA:** +54 2901-506214

**Email:** [beaglebuceos@gmail.com](mailto:beaglebuceos@gmail.com)

### Snorkeling

The easiest option for beginners in underwater exploration. Float on the surface using a snorkel tube, observing the seafloor and marine life of the Beagle Channel. Activity is done in dry suits due to cold water temperatures (same as for diving).

### Baptism Diving

Open to anyone in good health, no prior diving or swimming experience needed. Conducted 1:1 with an instructor who manages all equipment. Includes a basic technical briefing before heading to the coast. In the water, time is allowed for surface adaptation before descent begins.

### Certified Diver Dives

Guided dives, possibly with other divers of the same level. Includes all equipment and a guide. Encounter marine life such as crabs, starfish, anemones, etc. Option for **Boat Dives** at Bridges Islands, one of the most beautiful dive spots in the channel.

### Duration

Approximately 4–5 hours. Includes: safety briefing, fitting of suits and equipment, transfer to dive/snorkeling site, activity, and return for changing and refreshments.

**Requirements - Divers must provide weight, height, and information about any existing medical conditions.**

# HORSEBACK RIDING IN USHUAIA

## ARAKUR EXPERIENCE

**Tel:** + 54 2901442908 | **Email:** [experience@arakur.com](mailto:experience@arakur.com)

### Native Forest Ride

Explore lenga and coihue forests, ending at the Turbal Lagoon viewpoint. Duration: 60 minutes (1 hour).

### Beagle Channel Viewpoint Ride

Start in lenga and coihue forests, enjoy a snack, then continue to the Beagle Channel viewpoint with panoramic views of Ushuaia, valleys, hills, and the Channel. Duration: 120 minutes.

#### Schedule & Rates:

10 a.m. or 3 p.m. – 1-hour ride: USD 90

12pm – 2-hour ride including lunch box: USD 125

### Half Day Spa + Horseback Riding + Lunch Box

Use of Spa facilities (from 8 am to 12 pm) + guided hike through the Cerro Alarken Nature Reserve. Meet at reception to take a shuttle to the stables for a 2-hour horseback ride, with a lunch box included. Afterward, hike back to reception.

Adults: \$279.000 - Children: \$257.000.-

## LAGO ESCONDIDO HORSEBACK RIDING

**Tel:** +54 2901-642664 **Email:** [cabalgatalagoescondido@gmail.com](mailto:cabalgatalagoescondido@gmail.com)

Half-day excursions (minimum 2–3 people). **Transportation included; inquire for rates without transportation.** All rates in Argentine currency.

### HIDDEN LAKE HORSEBACK RIDING WITH SNACK - WINTER

This half-day outing consists of a 1-hour horseback ride around Hidden Lake. We'll explore the forest and shoreline surrounding the lake and then enjoy a mid-morning snack/picnic at the refuge. You can choose between our transportation or your own vehicle; the price varies depending on the vehicle you choose.

WITH transportation \$160.000 per person / children under 11 years old \$112.-

WITHOUT transportation \$150.000 per person / children under 11 years old \$105.000 WITHOUT transportation: children 0-5 years old FREE

**HORSEBACK RIDING WITH BARBECUE - WINTER** Discover the charm of the surroundings of Lago Escondido and the end of the Andes Mountains with a pioneering family in the area.

Enjoy a horseback ride with incredible views of Lago Escondido and immerse yourself in the Fuegian forest, until you reach its shore.

We finish the activity by enjoying a delicious beef barbecue in a cabin surrounded by horses.

With transportation: \$250.000 per adult / children under 11 years old \$175.000.-

WITHOUT transportation: \$240.000 per adult / children under 11 years old \$168.000.-

# USHUAIA GOLF CLUB

## Contact Information

**Location:** Valle del Río Pipo, 7 km from Ushuaia city center

**WA:** +54 2901-616676

**Email:** [ushuaiagolfclub@gmail.com](mailto:ushuaiagolfclub@gmail.com)

## Club Hours

Tuesday–Friday: 10:00–18:00

Saturday, Sunday & holidays: 9:00–19:00

Monday: by reservation

## Course Details

- Length: 5,371 m (5,823 yards)
- 9 holes with double tee, par 70 (35 out, 35 in)
- Layout: 2 par-3, 5 par-4, 2 par-5
- **Improved Lie:** Allowed across the course (ball can be moved up to 20 cm)

## Rates

### Argentine Golf Association Members:

Green Fee: \$30,000 ARS

Club Rental: \$20,000 ARS

### Non-handicap Players

Green Fee 18 holes: USD 60

Club Bag Rental: USD 25

Classes and promotions: inquire at the club

**Staff:** Bilingual (English)

**Caddie:** Not available

**Inquiries:** +54 2901-616676 – Guillermo G. Godoy

**President:** Fulvio Baschero

## PUERTO ALMANZA

Fishermen's village located 75 km from Ushuaia. Offers restaurants, recreational centers, Puerto Pirata, La Granja del Beagle, and Chacra Ruka Kellen. Excursions include *Sabores del Beagle*, *Ruta de la Centolla*, king crab fishing with gourmet lunch, agrotourism, and activities linked to indigenous communities. Helicopter tours to the *Grandes Lagos* are also available.

### Dining in Puerto Almanza

#### A'kum Restó & Me **CLOSED**

**Phone:** +54 2901-656463 **Hours:** Daily from 12 to 4 pm.

**Reservation:** Recommended by Wsp. **Payment:** All accepted

#### Chacra Ruka Kellen

**Hours:** Daily from 1 to 8 pm. **Reservation:** Not required

#### La Mesita de Almanza

**Phone:** +54 2901-516059 **Hours:** Friday to Sunday from 12 pm.

**Reservation:** WhatsApp or first-come, first-served **Payment:** All accepted

#### La Sirena y el Capitán **CLOSED**

**Phone:** +54 2964-610198 **Email:** [lasirenayelcapitan@gmail.com](mailto:lasirenayelcapitan@gmail.com)

**Reservation:** Required **Payment:** All accepted

#### La Oveja (King Crab Route) **CLOSED**

**Phone:** +54 2901-536154 **Email:** [evt.rutadelacentolla@gmail.com](mailto:evt.rutadelacentolla@gmail.com)

**Hours:** Daily from 11:30 am to 5 pm.

**Reservation:** Required, exclusive for agency passengers

#### El Frontón Restaurant

**Phone:** +54 2901-585779 **Hours:** Daily from 11 am to 5 pm.

**Payment:** All accepted

#### El Rincón del Viejo **CLOSED**

#### Jemmy y York

**Phone:** 011-3135-1667 **Hours:** Daily from 10 am to 6 pm.

#### Puerto Pirata **CLOSED**

**Phone:** +54 2901-470068 **Hours:** Daily from 12 am to 5 pm.

(Closed Wednesday) **Reservation:** Required

#### Zorro Viejo Puerto Almanza

**Phone:** +54 2964-600321 **Email:**

[zorroviejopuertoalmanza@gmail.com](mailto:zorroviejopuertoalmanza@gmail.com) **Hours:** Thursday–Sunday & holidays from 12 to 10 pm. **Reservation:** Required **Payment:** All accepted

#### Ona Restorán

**Phone:** +54 2901-614459 **Hours:** Daily from 12 to 6:30 pm.

**Reservation:** Required

## RECREATIONAL & WINTER ACTIVITIES CENTERS

In the valley surrounded by mountains, on the outskirts of Ushuaia, you'll find several activity centers and dining establishments.

### Tachuela Oyarzún Open-Air Ice Skating Rink

**Municipal Sports Center. Open-air skating rink.**

**WhatsApp: +54 9 2901 531266** Monday to Friday from 9 am to 9 pm. Weekends and holidays from 2 pm to 9 pm. Yamana Bar & Patín GDS: daily from 9 am to midnight. Skate rental + daily pass. Lockers.

### Francisco Jerman Nordic or Cross-Country Ski School CLOSED

**Road to Martial Glacier, 5 km from the town center.**

**WhatsApp: +54 9 2901 649595** Daily from 9 am to 5 pm. Equipment rental for cross-country skis, sleds, and snowmobiles. Ski lessons for children and adults.

### Cerro Martial, End of the World Park

**Road to Martial Glacier, 7 km from the town center.**

**WhatsApp: +54 9 2901 588323.** Open daily from 10 am to 5 pm. Chairlift with daily pass. Ski and snowboard lessons. Crampon and trekking pole rentals.

### Ushuaia Ski School - Martial Glacier CLOSED

**Located on the road to Martial Glacier, 7 km from the city center.**

**WhatsApp: +54 9 2901 503767** - Daily from 10:00 AM to 5:00 PM. Ski, snowboard, touring ski, snowshoe, clothing, and accessory rentals. Ski and snowboard lessons for children and adults.

### Siberianos de Fuego Dog Kennel

**19 km away. WhatsApp: +54 9 2901 509320** - Open daily from 10 am to 4 pm. Dog breeding, kennel visits, dog sledding. With reservation

### Nunatak - Antartur

**20 km away. WhatsApp: +54 9 2901 611338** - Book through Antartur.

Dog sledding, snowmobiling, snowshoeing. Combined day and night excursions: sledding + snowshoeing + tracked ATVs + lunch or dinner. 4x4 lake tours. Advance booking required.

### Tierra Mayor

**21 km away. WhatsApp: +54 9 2901 619245** - Open daily from 10: am. Cross-country skiing, equipment rental, lessons for children and adults. Ice skating rink, snowshoe rental, sleds, toboggans, and roller skates. All-you-can-eat lamb.

### Llanos del Castor

**24 km away. WhatsApp: +54 9 2901 653848** - Restaurant All-you-can-eat lamb and à la carte options. Combined day and night excursions, snowshoeing, snowmobiling, cross-country skiing. Accommodation. With reservation

### Valle Hermoso

**24.5 km away WhatsApp: +54 9 2901 602313** - Organized excursions with reservations. Snowmobiling, banana boat rides, snowshoeing, ski touring, day and night excursions. Fat biking. Lunch or dinner. With reservation

### Las Cotorras

**25 km away** Restaurant open daily from 10 am - All-you-can-eat lamb. À la carte menu.

Combined day and night activities. Snowmobile tours from 9:30 am to 5:00 pm. Reservations: +54 9 2901 602303

### Cerro Castor

**27 km away . www.cerrocator.com**

**OPEN RESTAURANT AT THE BASE OF THE EAGLE'S MORADA (Weekends in June)** Daily from 10 am to 5 pm. Andean café, ice skating rink and cross-country ski track. Rentals. Ski and snowboard center. Ski and snowboard lessons. Equipment rental. Restaurants. Shops. More than 30 slopes of varying difficulty. Daycare, lockers, adaptive skiing.

### Haruwen

**36 km away** Restaurant, Motorcycle Museum and Distillery.

Park Austral: Combined activities, ATVs, horseback riding, gastronomy. Book with Brasileiros em Ushuaia: +54 9 2901408801

## TREKKING & ADVENTURE TOURISM

| Name                           | Contact   | Activities Offered   |
|--------------------------------|---|--|
| <b>54° Trek Expediciones</b>   | 54trekkingexpediciones@gmail.com  | Summit to Monte Alvear normal route, Trekking Glaciar Ojo del Albino, Glaciar Vinciguerra.   |
| <b>Alma Calma Expediciones</b> | 2901 582989 · nico@almacalma.net  | Trekking to Laguna Esmeralda.  |
| <b>Antartur</b>                | <b>Rosas 184</b> · 2901 611338 ·<br>agencias@antartur.tur.ar ·<br><a href="http://www.antartur.tur.ar">www.antartur.tur.ar</a>                                  | Trekking to Laguna Esmeralda, Glaciar Vinciguerra, and Ojo del Albino. Off Road 4x4 combined with canoeing on Lago Escondido.                        |
| <b>Arakur Experience</b>       | <b>Héroes de Malvinas 2621</b> · 2901 442900 ·<br>fo@arakur.com   | Trekking to Laguna Esmeralda and Estancia Túnel to Río Encajonado. Horseback riding in Alarken Reserve.  |
| <b>Arpón Turismo</b>           | <b>Alem 3129</b> · +54 9 2901 503892 ·<br>reservas@arpontrekking.com ·<br><a href="http://www.arpontrekking.com">www.arpontrekking.com</a>                      | Trekking to Laguna Esmeralda, Estancia Túnel, Martial, Vinciguerra, and Ojo del Albino Glaciers.   |
| <b>Best Tour Patagonia</b>     | <b>San Martín 1154</b> +54 9 2901 467380 ·<br>info@best-tourpatagonia.com ·<br><a href="http://www.best-tourpatagonia.tur.ar">www.best-tourpatagonia.tur.ar</a> | Trekking to Laguna Esmeralda.  |
| <b>Brasileiros em Ushuaia</b>  | <b>San Martín 870</b> · 2901 422157 ·<br><a href="http://www.brasileirosemushuaia.com.br">www.brasileirosemushuaia.com.br</a>                                   | Trekking to Laguna Esmeralda, Martial Viewpoint, and Laguna de los Témpanos. 4x4 Off Road Lakes, snowmobiles, and ATVs at Park Austral.              |
| <b>Canal Fun &amp; Nature</b>  | <b>Pasaje Tomás Beban 1010</b> · 2901 431591 ·<br>info@canalfun.com · <a href="http://www.canalfun.com">www.canalfun.com</a>                                    | 4x4 Off Road to Lago Escondido and Fagnano. Canoeing on Río Lasifashaj + hiking on Gable Island + navigation to Estancia Harberton (penguin colony). |

|   |   |  |
|---|---|--|
| <b>CERRO MARTIAL PARQUE DEL FIN DEL MUNDO</b> | administracion@cerromartial.com.ar<br>www.cerromartial.com.ar   | Trekking in Louis Martial Protected Natural Area, Circuit of the Clouds - Martial Glacier Base Viewpoint and Martial Ridge Trail                                     |
| <b>EXPERIENCIA AUSTRAL</b>                    | 2901441300<br>operacionesevt@loscauquenes.com<br>www.loscauquenes.com/es/   | 4x4 Off Road to Lago Escondido and Fagnano Off Road 4x4 & Trekking Cascada del Duende, Puerto Almanza y Punta Paraná.  |
| <b>FRECUENCIA SUR</b>                         | Dos Banderas Casa 17 -<br>frecuenciasurushuaia@gmail.com  | Trekking to Laguna Esmeralda, Glaciar Martial, Trekking to Laguna de Los Témpanos and Glaciar Vinciguerra. Circumbalación Laguna Turquesa – C° Carbajal – Valle Olum |
| <b>HAIMA USHUAIA TREKKING Y MONTAÑISMO</b>    | violeta.lobo.p@gmail.com  | Trekking to Glaciar Ojo del Albino   |
| <b>Haush Expediciones</b>                     | 2901 615561 · elchapans@gmail.com   | Trekking to Valle Olum and Bahía Sloggett in Península Mitre Natural Area.   |
| <b>Info de Ushuaia</b>                        | admin@infodeushuaia.com ·<br><a href="http://www.infodeushuaia.com">www.infodeushuaia.com</a> · 2901 612142   | Trekking to Laguna Esmeralda (alternative route via Arroyo Esmeralda).   |
| <b>Isla de los Fuegos</b>                     | <b>San Martín 611</b> · 2901 580525 ·<br>ventas@isladelosfuegos.com.ar  | Trekking to Laguna Esmeralda. Off Road to Lago Escondido and Fagnano.  |
| <b>LATITUD USHUAIA TRAVEL</b>                 | <b>Gob. Godoy 62</b> - 2901 46-533<br>administracion@latitudushuaia.tur.ar  | Trekking to Laguna Esmeralda, Glaciar Vinciguerra and Monte Susana.  |
| <b>Magellanic Nature Tours</b>                | <b>Salvador Dalí 2005</b> · 2901 414248 ·<br>magellanic@hotmail.com ·<br><a href="http://www.magellanicnaturetours.com">www.magellanicnaturetours.com</a> | Birdwatching treks to Laguna Esmeralda, Paso Garibaldi, Monte Susana, and Glaciar Martial.   |
| <b>Meru Viajes y Turismo</b>                  | 11 6908 4059 · <a href="mailto:meru.evt@gmail.com">meru.evt@gmail.com</a><br>www.meruviajes.tur.ar  | Trekking to Laguna Esmeralda.  |
| <b>NATIVE ADVENTURE</b>                       | <b>Gob. Deloqui 756</b> -<br>administracion@yaghanadventure.com   | Trekking to Laguna Esmeralda and Balcones del Monte Susana. Trekking to Laguna   |

|   |   |  |
|---|---|--|
|   |   | Gemelas Trekking to Estancia Túnel. Cicloturismo/MTB on Mirador del Beagle-Cascada Beban and Estancia Túnel.   |
| <b>Natural Hiking by Andes Fueguinos</b>    | 2901 476656 · naturalhikingush@gmail.com  | Treks to Laguna Esmeralda, Lagunas Gemelas, Martial Glacier Viewpoint, Monte Susana, Laguna de los Témpanos, and Vinciguerra Glacier.  |
| <b>ONASHAGA EXPEDITIONS</b>                 | <b>Onas 426 - Dpto.1</b><br>operaciones@onashagaexpeditions.com<br>www.onashagaexpeditions.com  | Trekking to Laguna Esmeralda   |
| <b>Patagon Mountain Travel Agency</b>       | 2901 609991 ·<br>patagonmountaintravel@gmail.com ·<br><a href="http://www.patagonmountainagency.com">www.patagonmountainagency.com</a>                                | Treks in Península Mitre (Bahía Sloggett & Bahía Aguirre). Treks to Laguna Turquesa, Valle Carbajal, Cerro Cinco Hermanos, Torres del Río Chico, and Martial Area. Backcountry skiing and splitboarding in Martial, Olum, and Garibaldi Valleys. |
| <b>PINGÜINOS EXPEDICIONES</b>               | 2901 402145<br>reservas@pinguinosexp.com  | Trekking to Laguna Esmeralda   |
| <b>SENDEROS PATAGÓNICOS USHUAIA</b>         | senderospatagonicosushuaia@gmail.com<br>www.senderospatagonicos.com   | Trekking to Laguna Esmeralda. Trekking to Laguna de los Témpanos and Glaciar Vinciguerra,  |
| <b>Taun Ushuaia</b>                         | <b>Hol Hol 1403</b> · 2901 524417 ·<br>ignacioallendeguia@gmail.com   | Treks to Ojo del Albino Glacier, Vinciguerra Glacier, Monte Susana, and Lagunas Gemelas.   |
| <b>Tierra del Fuego Aventura</b>            | <b>San Martín 206</b> · 2901 600177 ·<br>comercial@tierradelfuegoaventura.com ·<br><a href="http://www.tierradelfuegoaventura.com">www.tierradelfuegoaventura.com</a> | 4x4 Off Road to Lago Escondido & Fagnano with lunch at Villa Marina. Treks to Martial Glacier Base Viewpoint and Laguna Esmeralda.   |
| <b>Tierra Turismo Excursiones Naturales</b> | <b>De los Ñires 2280, 1ºD</b> · 2901 610443 ·<br>info@tierraturismo.com   | Trekking to Laguna Esmeralda. 4x4 Off Road to Lago Escondido and Fagnano.  |
| <b>Titan Cuatro Elementos</b>               | <b>Hol Hol 1390</b> · 2901 401391 ·   | Treks to Laguna Esmeralda, Laguna Turquesa,  |

|                                   |  |  |
|-----------------------------------|--|--|
|                                   | titan4elementos@gmail.com ·<br><a href="http://www.titancuatroelementos.com">www.titancuatroelementos.com</a>  | Ojo del Albino Glacier, Submarino Waterfall, Torres del Río Chico, and Vinciguerra Glacier.  |
| <b>Ushuaia Extremo Travels</b>    | <b>25 de Mayo 50</b> · 2901 619587 ·<br>info@ushuaiaextremotravels.com ·<br><a href="http://www.ushuaiaextremoevt.tur.ar">www.ushuaiaextremoevt.tur.ar</a> | Electric Fat Bike to beaver ponds (winter), Andes crossing by bike, cycling to Playa Larga Reserve and Estancia Túnel. 4x4 Off Road to Lago Escondido & Fagnano. Treks to Ojo del Albino Glacier, Laguna de los Témpanos, Vinciguerra, and Laguna Esmeralda. |
| <b>Ushuaia Outdoors</b>           | +54 9 2901 607267 ·<br>reservas.ushuaiaoutdoors@gmail.com ·<br>@ushuaiaoutdoors  | 4x4 Off Road to Lakes with trekking and canoeing. Trekking to Laguna Esmeralda. Full Day Almanza. Cabo San Pablo excursion.  |
| <b>Ushuaia Patagonia Trekking</b> | 11 6761 2300 · jabaeza89@gmail.com   | Trekking to Vinciguerra Glacier.   |
| <b>USHUAIA TREKKING</b>           | Joaco.bianciotto@gmail.com<br>www.Ushuaiatrekking.com  | Trekking to Laguna Esmeralda   |
| <b>VENDAVAL EXPEDICIONES</b>      | <b>Del Mar 1955</b>  | Trekking to Laguna Esmeralda and to Glaciares Ojo del Albino, Glaciar Vinciguerra, without glacial transit.  |
| <b>Xplor Turismo</b>              | 2901 566666 · info@xplorturismo.com ·<br><a href="http://www.xplorturismo.com">www.xplorturismo.com</a>  | Trekking to Laguna Esmeralda and Lagunas Gemelas.  |
| <b>YAGHAN TURISMO</b>             | <b>Gob. Godoy 19</b> - <a href="mailto:yaghanturismo@gmail.com">yaghanturismo@gmail.com</a><br>www.yaghanturismo.tur.ar                                    | Off Road 4x4 to Lagos Escondido and Fagnano Trekking to Laguna Esmeralda and Glaciar Vinciguerra,  |

*Some activities are available year-round, while others depend on weather conditions. Private tours can be arranged. Guides are trained to advise on the necessary equipment.*

## TREKKING, CAMPING & MOUNTAIN BIKE EQUIPMENT RENTAL

| PLACE                         | ADDRESS                           | CONTACT                                       | SERVICES  | WEBSITE / EMAIL  |
|-------------------------------|-----------------------------------|---|---|--|
| <b>Ushuaia Extremo Rental</b> | 25 de Mayo 50                     | WA: +54 9 2901 619587                         | Trekking boots per day. Ski and snowboard equipment rental, jackets, pants, boots, crampons, trekking poles.  | <a href="http://www.ushuaiaextremo.com">www.ushuaiaextremo.com</a>   |
| <b>Home Bike</b>              | Araucanos 213                     | WA: +54 9 2901 493613                         | Bicycle rental: \$30,000 per day. Bicycle rental and spare parts  | IG homebikeush   |
| <b>Patagonia Rental</b>       | Tekenika 164                      | WA: +54 9 2901 656052                         | Trekking boots: \$10,000 per day. Jacket or pants: \$12,000 per day. Ski and snowboard equipment rental, jackets, pants, boots, crampons, trekking poles. | patagoniarentalski@gmail.com<br><a href="http://www.patagoniarental.com.ar">www.patagoniarental.com.ar</a> |
| <b>Wind Fly</b>               | De los Ñires 2466                 | WA: +54 9 2901 515158                         | Ski and snowboard equipment rental, jackets, pants, boots, crampons, trekking poles.<br>Sale of camping and nautical gear.                                | <a href="http://www.windflyushuaia.com.ar">www.windflyushuaia.com.ar</a>                                   |
| <b>Cumbre Rental</b>          | San Martín 830<br>Gob. Deloqui 51 | WA: +54 9 2901 601514                         | Trekking boots: \$15,900 per day. Rental of poles, gaiters, crampons, Ski and snowboard equipment rental.   | cumbrental@gmail.com<br><a href="http://www.cumbrental.com">www.cumbrental.com</a>                         |
| <b>Uliwaia</b>                | Patagonia 48                      | WA: +54 9 2901 634821                         | Trekking boots: \$10.000 per day. Pants: \$10,000 per day. Trekking and camping equipment rental.   | <a href="http://www.uliwaia.com">www.uliwaia.com</a>   |
| <b>Dr. Snow</b>               | Gob. Deloqui 737                  | WA: +54 9 2901 516809<br>WA:+54 9 2901547669  | Trekking boots: \$10.000 per day. Trekking and camping gear rental. Ski and snowboard equipment rental, jackets, pants, boots, crampons, trekking poles.  | info@drsnowrental.com<br><a href="http://www.drsnowrental.com">www.drsnowrental.com</a>                    |
| <b>Nieve de Montaña</b>       | Gob. Deloqui 399                  | WA: +54 9 2901 611516<br>WA: +54 9 2901582156 | Ski and snowboard equipment rental. Jackets, pants, trekking boots, poles, backpacks. Ask about combo deals.  | <a href="http://www.nievedemontaña-rentalski.com">www.nievedemontaña-rentalski.com</a>                     |
| <b>Yaghán Rental</b>          | Gob. Godoy 19                     | Wsp: 2901652524                               | Rental of pants or boots \$11,000 per day. Jackets \$12,000 per day. Accessories, hats, gloves, ask about promotions.                                     | yaghanturismo@gmail.com<br><a href="http://www.yaghanrental.com.ar">www.yaghanrental.com.ar</a>            |